

Delta-Mendota Subbasin

Domestic Well Mitigation Program

A Public Guide to Protecting Your Drinking Water

www.deltamendota.org | Adopted 2025 | Delta-Mendota Subbasin Joint Powers Authority



Domestic Well Owners



Protection Under SGMA



Mitigation Assistance



Safe Drinking Water

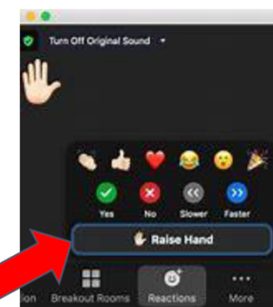
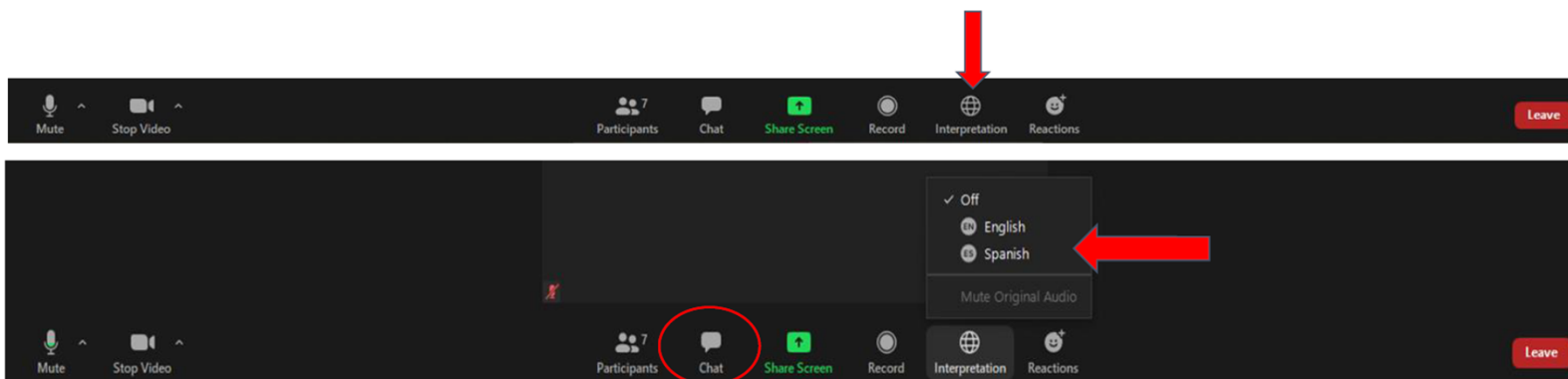
English

If you are a monolingual English speaker, please select the world-like interpretation icon at the bottom of the screen, then select English.

If you are using zoom via a telephone/tablet, you will select the three dots to see more options, followed by interpretation and then English.

Español

Si solo habla/o prefiere escuchar en español, seleccione el icono de interpretación que parece a un mundo en la parte inferior de la pantalla, luego seleccione español y no olvide silenciar el audio original. Si está usando Zoom en un teléfono o tableta, seleccionará los tres puntos para ver más opciones, seguido por interpretación y después español.



Raise Hand, & Reactions
Levantar Mano y Reacciones

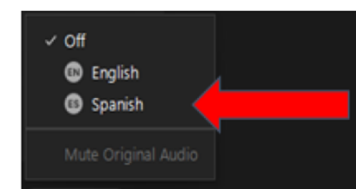
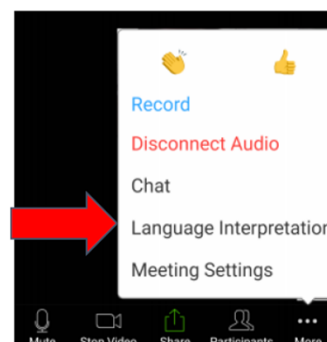
ASK QUESTIONS AND COMMENT
HACER PREGUNTAS O DAR COMENTARIOS

ZOOM APP ON PHONE OR TABLET

APLICACIÓN DE ZOOM POR TELÉFONO O TABLETA



SELECT THE THREE DOTS
SELECCIONE LOS TRES PUNTITOS



SELECT YOUR LANGUAGE
SELECCIONE SU LENGUAJE

AGENDA

1. Welcome and Logistics
2. Introductions
3. Program Overview
 - a. Background
 - b. Eligibility
 - c. Mitigation Process
 - d. Additional Resources
4. Q&A

Background: SGMA & the Delta-Mendota Subbasin



What is SGMA?

The Sustainable Groundwater Management Act (2014) requires local agencies to bring overdrafted groundwater basins into balance by 2040. Medium- and high-priority basins must develop and implement Groundwater Sustainability Plans (GSPs).



Groundwater Sustainability Agencies (GSAs)

21 GSAs formed across the Delta-Mendota Subbasin are responsible for implementing SGMA. They coordinate under a single GSP adopted in November 2024 and report jointly through the Delta-Mendota Subbasin GSAs JPA.

Delta-Mendota Subbasin

~1,200 Square miles

21 Groundwater Sustainability Agencies

4 Counties: Fresno, Madera, Merced, Stanislaus

2024 Single GSP adopted by all GSAs

2015 Minimum Threshold baseline year

Background: SGMA & the Delta-Mendota Subbasin

1

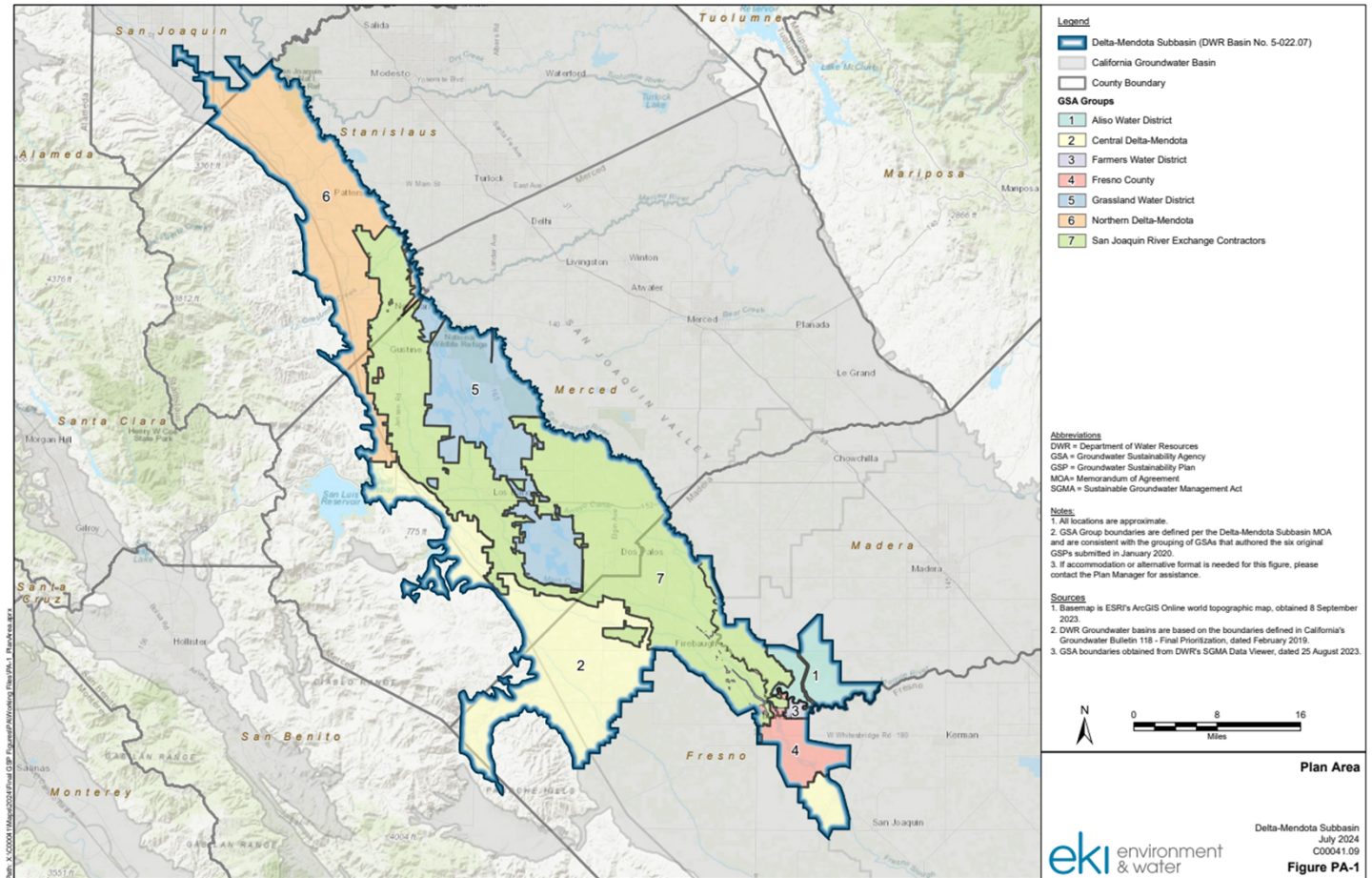
Subbasin

7

GSA Groups

21

Groundwater Sustainability Agencies



Why are We Implementing this Program?



SGMA & Your Well

The Sustainable Groundwater Management Act (SGMA) requires local Groundwater Sustainability Agencies (GSAs) to manage groundwater sustainably — balancing supply and demand to avoid "undesirable results."



Who Is Protected?

Domestic well owners and small water systems (≤ 14 connections) using groundwater for drinking water are the primary focus of this Policy — the people most vulnerable to groundwater level changes.



Our Commitment

GSAs are committed to keeping groundwater levels above 2015 historic lows. This program ensures that any eligible residential wells that are impacted by groundwater levels or quality due to GSA actions are protected.

By the Numbers

~2,890

Wells in the Subbasin

~3/yr

Wells projected to need help annually

24 hrs

Emergency water response target

72 hrs

Hauled (tanked) water delivery target, if needed/approved

Two Program Components

The Domestic Well Mitigation Policy addresses two distinct types of well impacts:



Component 1

Dry Well / Groundwater Level

Issue: Well goes dry or is at imminent risk of going dry due to groundwater level decline from GSA management actions

Short-Term Solutions: Bottled water within ~24 hrs of a complete application; temporary water tank within 72 hrs following site visit and at GSA's discretion

Long-Term Solutions: Pump lowering, well deepening, new well installation, or connection to a community water system

Funding: Funds reserved by subbasin for mitigation program. Implemented mitigation measures to be paid by local GSA



Component 2

Groundwater Quality (GWQ)

Issue: Domestic wells that exceed water quality thresholds under specific conditions for the following constituents:

- Nitrate
- Gross Alpha
- Chromium VI
- Arsenic, 1,2,3-TCP

Short-Term Solutions: Bottled water within ~24 hrs of a complete application; temporary water tank within 72 hrs following site visit and at GSA's discretion

Long-Term Solution: Point-of-use reverse osmosis system (up to \$2,500/well + 3 years of filter replacements), or other agreed alternative

Funding: Funds reserved by subbasin for mitigation program. Implemented mitigation measures to be paid by local GSA

Both components follow the same 4-step process: Notify → Apply → Review → Mitigate, and both include the right to appeal to the DM Subbasin GSAs JPA Board.

Who is Eligible? Dry Well / Groundwater Level



ELIGIBLE — You MAY Qualify If:

- ✓ You use groundwater for domestic health and safety purposes
- ✓ Your well was in place as of November 19, 2024 (GSP adoption date)
- ✓ You participate (or agree to participate) in your GSA's Well Registration Program
- ✓ You consent to a field investigation by the GSA
- ✓ Your well went dry or is at imminent risk due to groundwater level decline from GSA management actions



NOT ELIGIBLE — Does Not Apply If:

- ✗ Well was installed after November 19, 2024
- ✗ Well screen interval is shallower than Minimum Threshold levels
- ✗ Well failure is due to pump failure, clogged screens, or mechanical issues unrelated to water level decline
- ✗ Well failure is due to normal wear and tear based on age
- ✗ Applicant refuses to consent to GSA field investigation

Who is Eligible? Groundwater Quality Impacts



ELIGIBLE — You MAY Qualify If:

- ✓ You use a domestic/residential groundwater well serving no more than 14 service connections
- ✓ Your well was in place as of November 19, 2024 (GSP adoption date)
- ✓ You participate (or agree to participate) in your GSA's Well Registration Program
- ✓ You consent to a field investigation by the GSA
- ✓ You experience water quality degradation beyond Minimum Thresholds caused by GSA projects
- ✓ Nitrate, Gross Alpha, Chromium VI, Arsenic, and TCP-123 exceedances caused by GSA actions



NOT ELIGIBLE — Does Not Apply If:

- ✗ Well installed after November 19, 2024
- ✗ Well screen interval is shallower than Minimum Threshold levels
- ✗ Well is in an area already designated with degraded water quality by the GSA
- ✗ Applicant refuses to consent to GSA field investigation
- ✗ Impact not causally linked to GSA projects or management actions (determined by qualified technical analysis)

The 4-Step Mitigation Process



Step 1: How You'll Hear About This Program



Subbasin Website

Full program details, application form, and electronic submission available at www.deltamendota.org. GSAs may also host info or link to the subbasin site.



Public Meetings & Briefings

Policy status discussed at quarterly DM JPA Board meetings and semi-annual GSA board meetings. Informational sessions like this one will be recorded and posted online.



Regular Program Review

Implementation discussed at least quarterly by the DM JPA Board. Policy reviewed every 5 years. Annual reporting keeps the public informed.

Minimum Threshold Alert

If a monitoring well reading exceeds groundwater level or quality Minimum Thresholds (set at 2015 levels) due to GSA actions, GSAs *may* contact well owners within a 3-mile radius.

Notice will include:

- Details on the MT exceedance
- Information about this Policy
- How and where to file a claim
- Contact information for your GSA

Program Point of Contact

Karlee Liddy (Primary Contact) | (916) 767-4287, kliddy@hgcpm.com
Taylor Blakslee | (661) 477-3385, tblakslee@hgcpm.com

Step 2: Submitting Your Application

What the Application Asks For (Available at www.deltamendota.org)

Applicant Contact Info

- First & Last Name
- Mailing Address
- Phone & Email
- Relationship to property (if not owner)

Well Information

- Well address & county
- Parcel Number (APN)
- Well age, depth, casing size
- Number of homes served
- Description of the issue

Supporting Documents

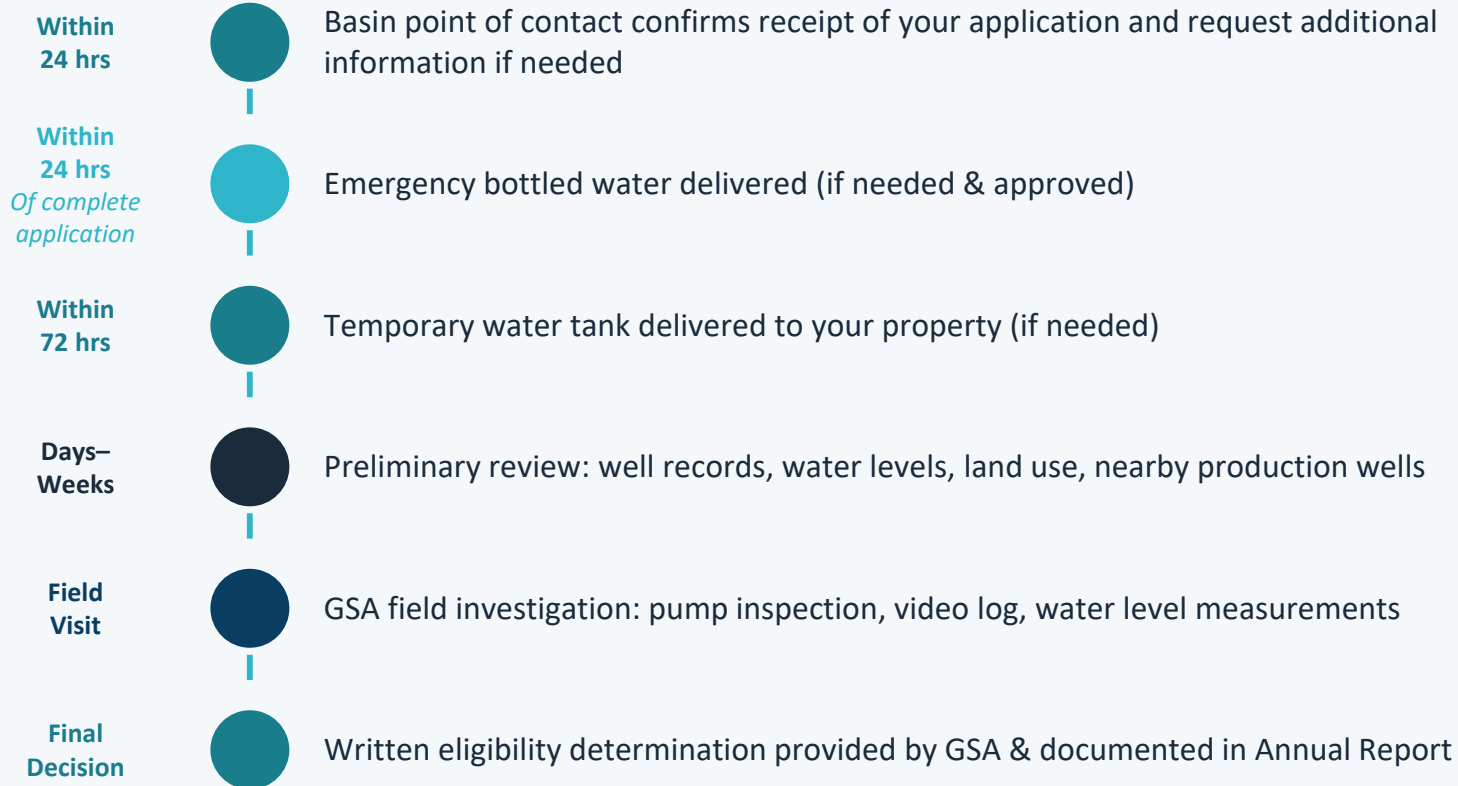
- County Well Permit (if available)
- Previous water quality reports
- Any well maintenance records

Emergency Water Request

- Check Yes/No for emergency water
- Indicate household size
- GSA will respond within 24 hrs
- As appropriate, tank delivery within 72 hrs following field invest.

⚠ Important: By submitting, you consent to a GSA field investigation. Refusing consent voids your application.

Step 3: GSA Eligibility Review



A well may be found INELIGIBLE if:

- X Pump failure
- X Clogged screens
- X Casing failure (unrelated to water levels)
- X Maintenance issue unrelated to GSA actions
- X Normal age-related wear & tear

Right to Appeal: Applicants may appeal in writing to the Delta-Mendota Subbasin GSAs JPA Board, which will form an ad hoc review committee.

Step 4: Mitigation Measures | Dry Well / Groundwater Level

Possible Mitigation Options:



Lower or Modify Pump

Adjust pump intake depth or equipment to reach water at lower levels



Deepen the Well

Drill deeper if the well has an open bottom to reach water-bearing zones



Install a New Well

Replace the existing well with a new well meeting current state & county standards



Connect to Water System

Facilitate connection to an existing municipal or community water system, if feasible

A Mitigation & Indemnification (MI) Agreement must be signed before work begins.



Step 4: Mitigation Measures | Groundwater Quality Impacts

Possible Mitigation Options:



Point-of-Use Treatment

Up to \$2,500 per well and three years of filter replacements for a point-of-use reverse osmosis system or other agreed alternative



Alternative Options

Other mutually agreed upon alternatives for up to \$2,500 per well



A Mitigation & Indemnification (MI) Agreement must be signed before work begins.

Additional Resources & Support

Other programs that may assist well owners, especially for rural domestic wells:

Self Help Enterprises

Free water sustainability services including tank water access, domestic well repair/replacement, and system connections. Income-eligible households in the San Joaquin Valley.

 1-559-802-1865  selfhelpenterprises.org

CV-SALTS Management Zones

Addresses nitrate and TDS water quality impacts. Phase II will include the Delta-Mendota Subbasin. Offers well testing, interim water supply, and water filling stations.

 centralvalleywaterboard.ca.gov

SAFER Program (State Water Board)

Safe and Affordable Funding for Equity and Resilience. Provides interim water supplies, emergency repairs, technical assistance, planning, O&M, and construction funding.

 waterboards.ca.gov

CA Office of Emergency Services

Contact your County Office of Emergency Services to begin seeking assistance with dry wells. Also see DWR's 'Be Well Prepared' website for well maintenance resources.

 caloes.ca.gov

Valley Water Collaborative (VWC)

Nonprofit coordinating free domestic well testing for nitrate and other contaminants across the Delta-Mendota Subbasin. Provides replacement drinking water to residents whose wells exceed primary contamination levels. Implements Early Action Plans under a SAFER grant in coordination with the 21 GSAs.

 valleywatercollaborative.org

Questions?

We're here to help protect your water supply.



Subbasin Website

www.deltamendota.org

Applications, policy documents, GSA map,
recorded sessions



Apply for Mitigation

Submit Online or by Mail

Find your GSA on the website, then submit
directly to them