



Joint Special Meeting of the Delta-Mendota Subbasin GSAs Joint Powers Authority and Coordination Committee

Tuesday, May 19, 2026, 12:00 PM

**Grassland Water District Board Room
200 W Willmott Ave, Los Banos, CA 93635**

The Public May Join the Meeting at the Zoom Link Below:

<https://zoom.us/j/93491446604>

Webinar ID: 934 9144 6604

Call-In: +16694449171,,93491446604# US

NOTICE IS HEREBY GIVEN that a Joint Special Meeting of the Delta-Mendota Subbasin GSAs Joint Powers Authority and Coordination Committee has been called for **Tuesday, May 19, 2026, 12:00 PM**, on items listed on the attached agenda, which is incorporated by reference and made a part hereof.

Teleconference Locations:

200 W Willmott Ave, Los Banos, CA 93635	2220 Tulare St. 6th Floor, Fresno, CA 93721
--	--

Persons with a disability may request disability-related modification or accommodation by contacting Karlee Liddy at the Hallmark Group Office, 500 Capital Mall Suite 2350, Sacramento CA 95814, via telephone at (916) 767-4287, or via email at kliddy@hgcpm.com. Requests should be made as far in advance as possible before the meeting date, preferably 3 days in advance of regular meetings or 1 day in advance of special meetings/workshops.

AGENDA

1. Call to Order/Roll Call (Hurley)
2. Pledge of Allegiance (Hurley)
3. Opportunity for Public Comment (Hurley)

Consent Calendar

4. Consider Approval of the Consent Calendar (Hurley)
 - a. Minutes of the April 13, 2026 Meeting
 - b. Budget to Actual Report

Action Items

5. Consider Approving the Proposed Subbasin Model Calibration Phased Approach (Blakslee/Dutton)
6. Consider Authorizing the Proposed Subbasin Model Calibration Cost Share (Blakslee/Dutton)
 - a. Consider Authorizing EKI to Develop and Submit a USBR WaterSMART Applied Science Grant Application to Partially Fund the Model Calibration (Blakslee/Dutton)
7. Consider Approving of the Groundwater Monitoring Guidance Document (Liddy)

Report Items

8. Update on the Domestic Well Mitigation Policy Briefing Workshop (Blakslee/Beutler)
9. Update on Houston Engineering Improvements to the Data Management System (Liddy)
10. Program Management Report and Update on Action Items (Blakslee)
11. Update on PRP Implementation and Exceedance Reporting (Mani)
 - a. Update on Q1 and Q2 Data Submittal to the DMS (Mani)
 - b. Report from GSAs with Exceedances (Blakslee/Mani) – *Nothing to report*
12. Update on Facilitation Support Services Outreach Activities (Beutler)

13. Next Steps (Blakslee)
14. Member Reports (Hurley)
15. Reports Pursuant to Government Code Section 54954.2(a)(3) (Layne)
16. Next Meeting(s): (Hurley)
 - a. Joint JPA Board / Coordination Committee Meeting – Monday, June 8, 2026,
Grassland Water District Boardroom
17. Adjournment (Hurley)

TO: Board of Directors
Agenda Item No. 4

FROM: Taylor Blakslee, Hallmark Group

DATE: May 19, 2026

SUBJECT: Review and Take Action on the Consent Calendar

Recommendation

Approve the Consent Calendar.

Discussion

The documents below are included in the consent calendar for consideration of approval:

- a. Minutes of the April 13, 2026 Joint Meeting of the Delta-Mendota Subbasin GSAs Joint Powers Authority and the Coordination Committee (**Attachment 1**)
- b. Budget to Actual Report from SLDMWA through February 2026 (**Attachment 2**)
This report was presented to the Board on April 13, 2026, but is included again to facilitate comparison to the updated report below.
- c. Updated Budget to Actual Report from SLDMWA through February 2026 (**Attachment 3**)
- d. Financial Statements from Hallmark Group through March 2026 (**Attachment 4**).



**Joint Meeting of the Delta-Mendota Subbasin GSAs Joint Powers Authority
Board of Directors and Coordination Committee**

Monday, April 13, 2026, 1:00 PM

Grassland Water District Board Room
200 W Willmott Ave, Los Banos, CA 93635

Draft Meeting Minutes

PARTICIPANTS:

Board Directors

Chase Hurley, Central DM GSA
Jim Stilwell, Farmers GSA
Joe Hopkins, Aliso Water District
Augustine Ramirez, Fresno County A&B
John Wiersma, San Joaquin River Exchange Contractors
Jarrett Martin, San Joaquin River Exchange Contractors
Ken Swanson, Grassland Water District – *Call in from noticed location*
Vince Lucchesi, Northern DM Region – *Call in from noticed location*

Others Present

Lauren Layne, Legal Counsel, Baker Manock & Jensen
Taylor Blakslee, Hallmark Group
Palmer McCoy, Mercy Springs Water District
Lacey McBride, Merced County

Present Via Zoom/Phone

Adam Scheuber, Del Puerto Water District
Alma Antua, Westlands Water District
Amir Mani, EKI
Amisha Thapar, Baker Manock & Jensen
Anona Dutton, EKI
Anthea Hansen, Del Puerto Water District
Bobby Pierce, West Stanislaus Irrigation District
Brittany Harker, Stanislaus County
Ellen Wehr, Grassland Water District
Ethan Andrews, Provost & Pritchard
Hailey Rowbatham, EKI

Jason Dean, Anatidae Consulting
Joel Andrews, City of Patterson
Kait Palys, INTERA
Lea Emmons, City of Tracy
Leslie Dumas, Woodard & Curran
Lisa Beutler, Stantec
Maria Razo, Stanislaus County
Matt Garcia, Del Puerto WD
Patrick McGowan, Panoche Water District
Ryo Takanashi, Water One
Sarah Boogay, Department of Water Resources
Susan Xie, EKI
Thomas Spankowski, City of Newman
Will Halligan, LSCE

1. Call to Order/Roll Call

Committee Chair Hurley called the meeting to order at 1:02 p.m. Board members Swanson and Lucchesi confirmed that there was no one else over 18 years old in the rooms with them.

2. Pledge of Allegiance

Committee Chair Hurley led the pledge of allegiance.

3. Committee to Consider Corrections or Additions to the Agenda of Items, as Authorized by Government Code Section 54950 et seq.

There were no corrections or additions to the agenda items.

4. Opportunity for Public Comment

Chair Hurley opened the floor for public comments, and no public comments were provided.

5. Report on the April 7th SWRCB Board Meeting

Director Hurley provided an update on the SWRCB meeting and the approval by the SWRCB of returning the Delta-Mendota Subbasin to the jurisdiction of DWR.

Consent Calendar

6. Committee to Review and Take Action on the Consent Calendar

- a. Minutes of the March 9, 2026 Meeting
- b. Budget to Actual Report

Mr. Blakslee highlighted that with the timing of the Board meetings, the budget to actual reports from Hallmark Group moving forward will be two months in arrears.

MOTION

Director Wiersma made a motion to approve the consent calendar, including the meeting minutes and budget to actual report. Director Hopkins seconded the motion, and it passed by unanimous roll call vote.

Closed Session

7. Conference with Legal Counsel - Anticipated Litigation

The Committee will meet in closed session to confer with legal counsel on significant exposure to anticipated litigation pursuant to paragraph (2) of subdivision (d) of Government Code Section 54956.9: (1 cases)

The DM Subbasin JPA Board did not enter closed session.

Open Session

8. Report from Closed Session

The DM Subbasin JPA Board did not enter closed session.

Action Items

9. Rescind the Special Project Agreement Between the Central DM GSA and the Delta-Mendota Subbasin GSAs Joint Powers Authority

Legal counsel Lauren Layne introduced this item and stated that in setting up bank accounts, it became evident that providing administrative and financial support services would be much more efficient if the Central DM GSA contracted directly with consultants rather than through a special project agreement (SPA) with the DM JPA. As such, the request is that both the Central DM GSA and the DM JPA rescind their action to enter into a SPA.

MOTION

Director Hopkins made a motion to rescind the special project agreement. The motion was seconded by Director Stilwell and passed unanimously via roll call vote.

10. Consider Authorizing EKI to Perform the Model Calibration in Fiscal Year 2027

Mr. Blakslee introduced this item and stated that based on conversations with interested parties, staff requested that EKI present a phased approach to the model calibration. Anona Dutton (EKI) presented the phased approach to the Board. She stated that it may cost more money to execute the phased approach but cited benefits as well.

Director Ramirez asked if the Board would like a recommendation from the technical ad hoc committee regarding the phased approach and Chair Hurley stated that the cost allocation piece needs to be discussed.

Blakslee and Layne iterated that the current cost share is at 1/7th but that the prior SPA for the single GSP contemplated budget allocation via diverse methods including

proportional pumping. Director Hurley and Director Lucchesi stated that they received feedback from Central and Northern to proceed under the 1/7th split.

Director Stilwell expressed concern regarding the 1/7th split for technical support services moving forward. Director Ramirez agreed and stated he would like to see prioritization of a proportional cost share allocation. Director Stilwell iterated that the cost share allocation for technical efforts in the Subbasin should be applied to all future technical efforts, so that conversations regarding cost share are not needed each time a technical item is presented to the Board for approval.

Director Ramirez suggested staff work with the budget ad hoc committee on a new cost-share approach for future technical efforts. Director Stilwell stated he has authority to vote on a phased approach under the condition that a new cost-share approach for future technical efforts is developed and approved.

Director Wiersma asked Stilwell what other types of technical efforts would be split in a different approach. Layne stated that technical and administrative items like the annual report would be difficult to categorize or define as strictly technical. Director Ramirez suggested that each GSA Group be represented by one attendee of the technical ad hoc and budget ad hoc meetings.

The Board directed staff to convene the technical ad hoc to review EKI's phased approach to the model calibration and review the Groundwater Monitoring Guidance Document. Further, the Board directed staff to convene a budget ad hoc meeting to develop cost share options for future technical efforts in the DM Subbasin, including the model calibration, with one representative from each GSA group present at both meetings. Last, the Board directed staff to bring both items back to the Board at its May meeting.

Report Items

- 11. Review and provide feedback on the Groundwater Monitoring Guidance Document**
Mr. Blakslee introduced this item and stated that Kait Palys (INTERA) drafted the document with input from EKI, and that it is intended to be used by field staff and GSA staff responsible for collecting and inputting data. Ms. Palys stated that the technical ad hoc should review and provide feedback by April 30, 2026. Chair Hurley directed staff to add this as an agenda item for the technical meeting and that it be brought back to the Board thereafter.

- 12. Review and Provide Feedback on the Domestic Well Mitigation Policy Briefing**
Mr. Blakslee introduced this item and stated that the briefing will take place on May 13, 2026, and will be recorded and posted online for public access. He gave an overview of the policy requirements, which were outlined in the Board packet.

Director Hopkins and the Board directed staff to receive all applications and to coordinate with the appropriate GSA. Director Stilwell asked if the reserve account for domestic well mitigation is on the financial statement or in a separate account? Blakslee and Layne stated that the reserve is in a separate, interest-bearing account.

13. Program Management Report and Update on Action Items

There were no questions or comments from the Board. Liddy stated that she has received signatures or commitments to sign the revised MOA from all but one GSA.

14. Update on PRP Implementation and Exceedance Reporting

Susan Xie introduced Hailey Rowbatham (EKI) as she will be assisting the DM Subbasin efforts with EKI. She stated that they recommend data collection January, April, July, October for quarterly measurements to allow for seasonal high and low. July and January 1 biannual upload to DWR required. She added that EKI plans to set the start time for investigation on the first day of those quarterly deadlines. She walked through an example of the exceedance investigation timeline from April 1, stating that the deadline for a GSA to complete their investigation would be June 1.

Director Martin asked about April being representative of the seasonal high, as the pumping season may influence those values and Ms. Xie stated that the timelines stated will allow DMS upload and GSA time to investigate.

Anthea Hansen (Del Puerto Water District) agreed that April would not be the best representation for seasonal high and that February would better represent seasonal high conditions. Ms. Dutton stated that the timeline proposed is to provide a common timeline for GSAs to conduct PRP investigations. The Board directed staff to stick to the February timeframe for seasonal high measurements.

Ms. Xie reminded GSA representatives that the well registration and well metering deadline was January 2026 and requested that if GSAs have additional wells to register and meter, to submit that information to the PRP Dashboard. Ms. Xie then provided a review of GWL and GWQ monitoring watchlist wells from Fall 2025.

15. Update on SGMA Round 1 Implementation Grant

Leslie Dumas (Woodard & Curran) introduced this item and stated that Amendment 6 is currently being processed by DWR. She provided a breakdown of the remaining funds and anticipated uses for funds for invoice 15, as outlined in the packet. Invoicing package 16 for components 8 and 11 needs to be complete by end of June 2026 for timely submission to DWR. Aliso GSA will need to finalize a component completion report for component 11.

Mr. Blakslee stated that at the March 9 meeting, the Board directed staff to facilitate the execution of the contract with W&C to submit one additional invoicing package to DWR. The Board also directed staff to work with Aliso, Del Puerto Water District, and EKI

to map existing or planned subsidence benchmark sites and to recommend up to six additional benchmark sites to fill data gaps. Ms. Xie provided context for the analysis and recommendation for the 6 additional benchmark sites along critical infrastructure.

Will Halligan (LSCE) asked if staff could provide a tabulated version of the recommended locations to better coordinate with the consultants in the GSAs where they are recommended. Ms. Dumas stated that she provided time out to March 2027, but timing for invoicing package is firmly June. The Board directed staff to move forward with the additional suggested sites and to coordinate with appropriate GSAs.

16. Update on Facilitation Support Services Outreach Activities

a. Update on the Merced Joint Meeting Regarding Comment Letters on Periodic Evaluations

Lisa Beutler (Stantec) introduced this item and stated that data adequacy, technical coordination opportunities on interconnected surface water and leveraging grant opportunities were key items discussed during the Merced Subbasin meeting.

17. Next Steps

Blakslee listed the following next steps:

- Distribute budget to actual report template to the Board.
- Convene technical and budget ad hoc to discuss phased approach and cost share allocations, respectively. Ensure one representative from each GSA group is present at both meetings.
- Coordinate with remaining GSA signatories on the revised MOA.
- Work with GSA representatives on the status of compliance with registration and metering requirements.
- Work with appropriate GSAs and consultants to determine feasibility of establishing the recommended subsidence benchmark sites.
- Staff work with the communications ad hoc committee to finalize the well mitigation policy workshop materials. Host workshop on May 13, 2026.

18. Member Reports

Director Martin stated that he would be attending the State Water Resources Control Board ribbon cutting ceremony on April 14, 2026.

19. Reports Pursuant to Government Code Section 54954.2(a)(3)

Nothing to report.

20. Next Meeting(s):

- a. May 18, 2026, 1 p.m. PST, Grassland Water District Board Room

21. Adjournment

Chair Hurley adjourned the meeting at 3:12 p.m.



2026 DELTA-MENDOTA SUBBASIN GSAs JPA BOARD MEETING DATES (2nd Monday, unless otherwise listed) - Grassland Water District Board Room

May 18, 2026
June 8, 2026
July 13, 2026
August 10, 2026
September 21, 2026
October 12, 2026
November 16, 2026
December 14, 2026

LIST OF ACRONYMS

CEQA	California Environmental Quality Act
DMS	Data Management System
DWR	California Department of Water Resources
FSS	Facilitation Support Services
GSA	Groundwater Sustainability Agency
GSP	Groundwater Sustainability Plan
ISW	Interconnected Surface Water
JPA	Joint Powers Authority
MOA	Memorandum of Agreement
MOU	Memorandum of Understanding
MT	Minimum Threshold
PRP	Pumping Reduction Plan
RMW	Representative Monitoring Wells
SLDMWA	San Luis & Delta-Mendota Water Authority (Authority)
SMC	Sustainable Management Criteria
SWRCB	State Water Resources Control Board

Attachment 2

**SAN LUIS & DELTA-MENDOTA WATER AUTHORITY
SGMA ACTIVITIES - COORDINATED COST-SHARE AGREEMENT
MARCH 1, 2025 - FEBRUARY 28, 2026
COORDINATED (FUND 63)
ACTIVITY AGREEMENTS BUDGET TO ACTUAL**

Report Period 3/1/25 - 2/28/26

EXPENDITURES	Annual Budget	Paid/ Expense	Amount Remaining	% of Amt Remaining	Expenses Through
<u>Legal:</u>					
Baker Manock & Jensen	\$ 70,000	\$ 87,938	\$ (17,938)	-26%	2/28/26
<u>Other Professional Services:</u>					
GSP Implementation Contracts					
Coordinated Annual Report Activites (Common Chapter, Water Level Contouring)	\$ 149,675	\$ 161,040	\$ (11,365)	-8%	1/31/26
DMS Hosting, Augmentation and Support	\$ 12,000	\$ 4,490	\$ 7,510	63%	9/29/25
Staff Augmentation Support	\$ 200,000	\$ 192,496	\$ 7,504	4%	12/31/25
DAC Outreach and Coordination	\$ 20,000	\$ -	\$ 20,000	100%	
SGMA Implementation Grant Round 1 SPA (A9)	\$ 175,015	\$ 104,574	\$ 70,441	40%	12/31/25
Inadequate Determination Response (EKI)	\$ 55,000	\$ 50,868	\$ 4,132	8%	9/30/25
Interconnected Surface Water	\$ 504,455	\$ 106,895	\$ 397,560	79%	12/31/25
Domestic Well Mitigation Funds	\$ 100,000	\$ -	\$ 100,000	100%	
<u>Other:</u>					
Executive Director	\$ 750	\$ -	\$ 750	100%	
General Counsel	\$ 1,000	\$ 78	\$ 922	92%	4/4/25
Water Policy Director	\$ 20,000	\$ 19,418	\$ 582	3%	2/28/26
In-House Staff	\$ 3,000	\$ 3,533	\$ (533)	-18%	2/28/26
Conferences & Training	\$ 1,000	\$ -	\$ 1,000	100%	
Travel/Mileage	\$ 1,500	\$ 70	\$ 1,430	95%	4/30/25
Group Meetings	\$ 5,000	\$ 52	\$ 4,948	99%	6/30/25
Telephone	\$ 500	\$ -	\$ 500	100%	
Equipment and Tools	\$ 2,000	\$ -	\$ 2,000	100%	
Total Expenditures	\$ 1,320,895	\$ 731,453	\$ 589,442	45%	



**Delta-Mendota Subbasin GSAs Joint Powers Authority
Financial Statements
March 2026**

Delta-Mendota Subbasin GSAs Joint Powers Authority
Combined Financial Statements
Fiscal Year-to-Date Through March 31, 2026

Combined Statement of Net Position

Current Assets	
Cash - JPA Checking - JP Morgan Chase <i>(non-interest bearing)</i>	\$ -
Cash - Northern Checking - J.P. Morgan Chase <i>(non-interest bearing)</i>	-
Accounts Receivable - JPA	636,350
Accounts Receivable - Northern	203,741
Total Assets	\$ 840,091
Current Liabilities	
Accounts Payable - JPA	\$ 44,217
Accounts Payable - Northern	5,659
Total Liabilities	\$ 49,876
Net Position	
Unrestricted	\$ 690,215
Restricted	100,000
Total Net Position	\$ 790,215

Combined Statement of Change in Net Position With Budget Variance

	<u>Actual</u>	<u>Budget</u>	<u>Variance</u>
Revenue			
Member Agency Funding	\$ 740,091	\$ 740,091	\$ -
Total Revenue	\$ 740,091	\$ 740,091	\$ -
Operating Expenses			
Legal Counsel	\$ 8,919	\$ 12,500	\$ (3,581)
SGMA Implementation Grant Administration	-	2,500	(2,500)
Program Manager/Executive Director	27,804	31,874	(4,069)
Technical Consultants - Northern	-	6,667	(6,667)
Annual Report	3,515	16,667	(13,152)
Data Management System Support	-	2,292	(2,292)
Outreach Support	-	2,917	(2,917)
Model Extension	-	4,167	(4,167)
GSP Implementation Support	9,638	20,833	(11,195)
Startup Costs	-	1,250	(1,250)
Contingency	-	2,083	(2,083)
Total Operating Expenses	\$ 49,876	\$ 103,749	\$ (53,872)
Change in Net Position	\$ 690,215	\$ 636,343	\$ 53,872

Delta-Mendota Subbasin GSAs Joint Powers Authority (JPA)

Financial Statements

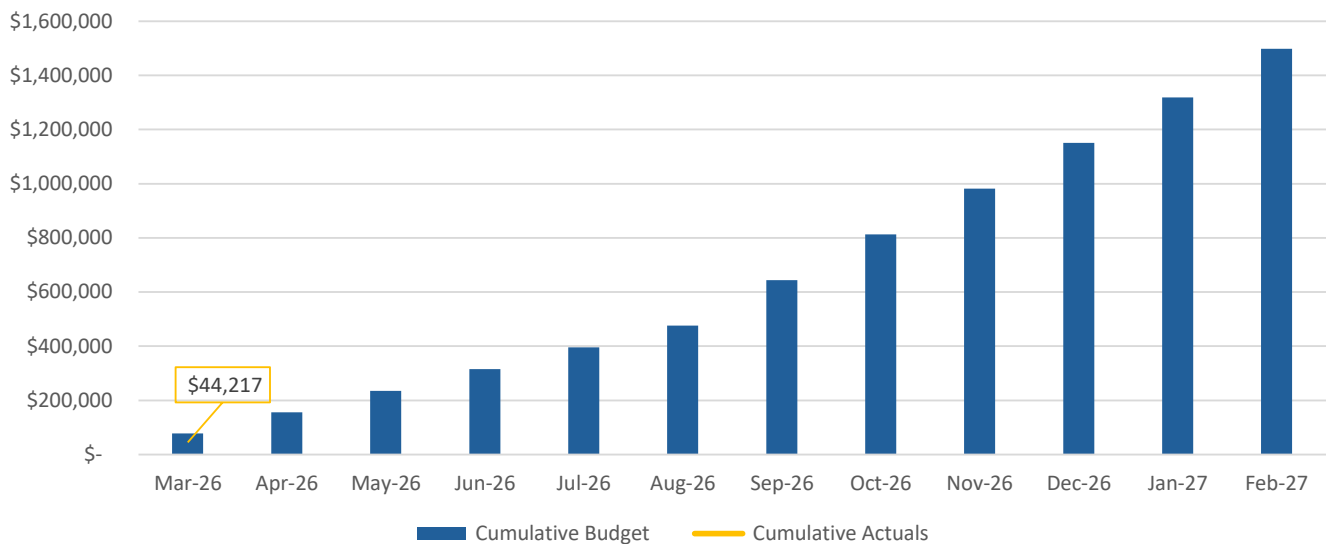
Fiscal Year-to-Date Through March 31, 2026

Statement of Change in Net Position With Budget Variance

	Actual	Budget	Variance
Revenue			
Member Agency Funding	\$ 536,350	\$ 536,350	\$ -
Total Revenue	\$ 536,350	\$ 536,350	\$ -
Operating Expenses			
Legal Counsel	\$ 7,764	\$ 10,833	\$ (3,069)
SGMA Implementation Grant Administration	-	2,500	(2,500)
Program Manager/Executive Director	23,300	22,917	384
Annual Report	3,515	10,417	(6,902)
Data Management System Support	-	2,292	(2,292)
Outreach Support	-	2,917	(2,917)
Model Extension	-	4,167	(4,167)
GSP Implementation Support	9,638	20,833	(11,195)
Startup Costs	-	1,250	(1,250)
Total Operating Expenses	\$ 44,217	\$ 78,125	\$ (33,908)
Change in Net Position	\$ 492,133	\$ 458,225	\$ 33,908

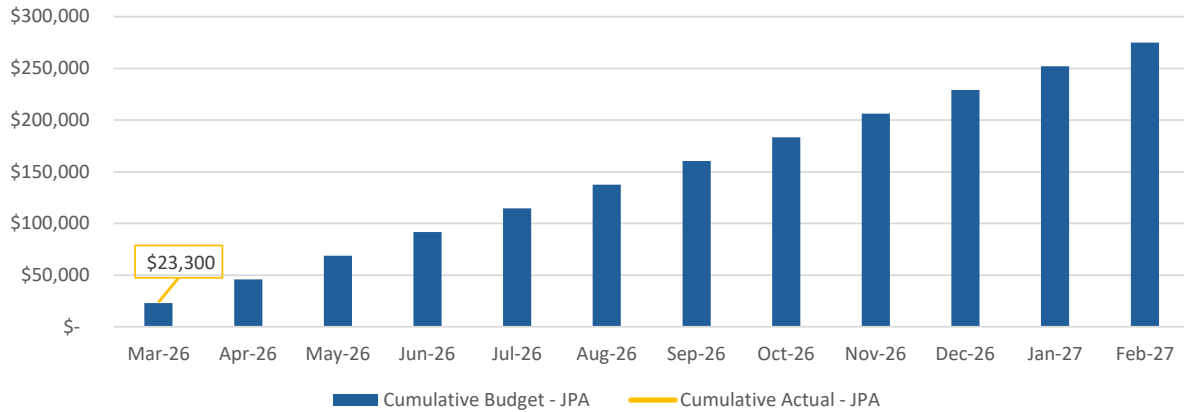
Delta-Mendota Subbasin GSAs Joint Powers Authority (JPA)

FYTD Budget-to-Actual

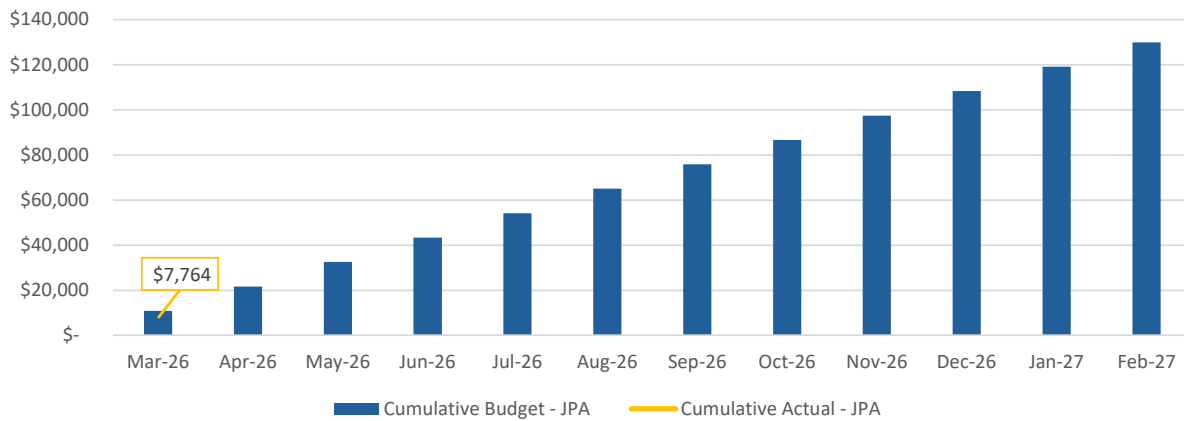


Delta-Mendota Subbasin GSAs Joint Powers Authority (JPA) Primary Contracts

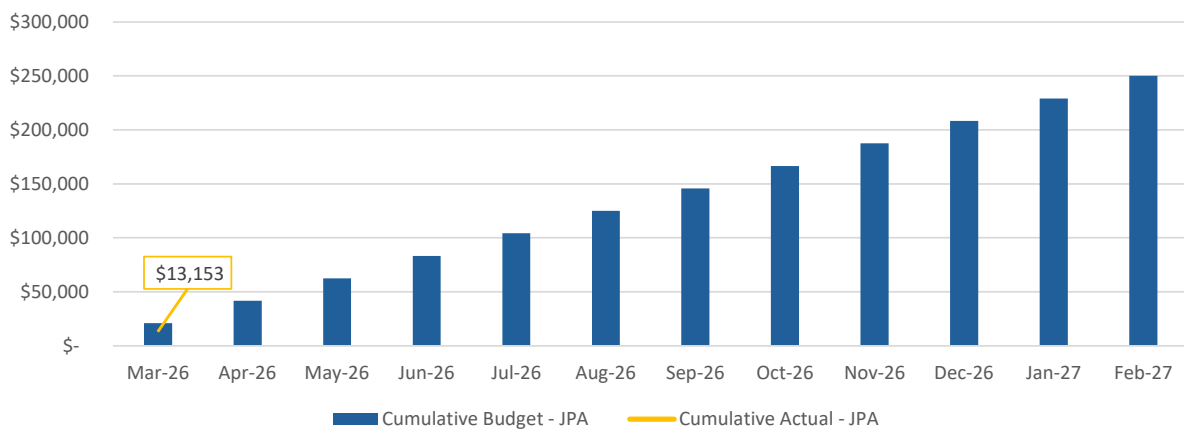
Hallmark Group FYTD Budget-to-Actual



Baker Manock & Jensen FYTD Budget-to-Actual



EKI Environment & Water FYTD Budget-to-Actual



Northern Delta-Mendota Regional Management Committee

Financial Statements

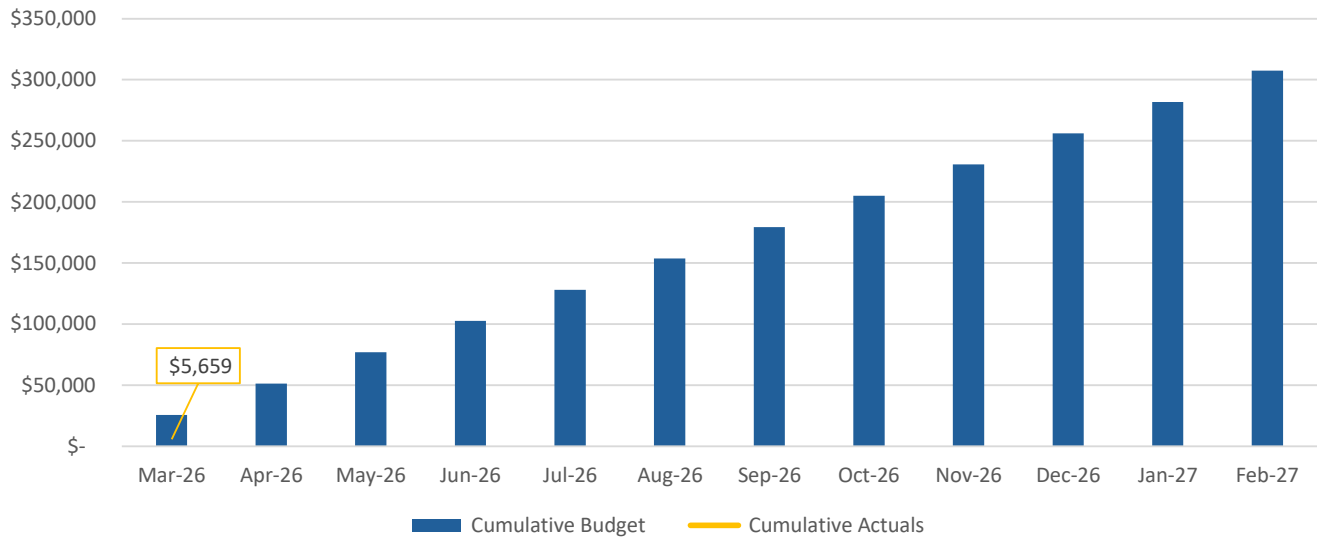
Fiscal Year-to-Date Through March 31, 2026

Statement of Change in Net Position With Budget Variance

	Actual	Budget	Variance
Revenue			
Member Agency Funding	\$ 203,741	\$ 203,741	\$ -
Total Revenue	\$ 203,741	\$ 203,741	\$ -
Operating Expenses			
Legal Counsel	\$ 1,155	\$ 1,667	\$ (512)
Program Manager/Executive Director	4,504	8,957	(4,453)
Technical Consultants	-	6,667	(6,667)
Annual Report	-	6,250	(6,250)
Contingency	-	2,083	(2,083)
Total Operating Expenses	\$ 5,659	\$ 25,624	\$ (19,964)
Change in Net Position	\$ 198,082	\$ 178,118	\$ 19,964

Northern Delta-Mendota Regional Management Committee

FYTD Budget-to-Actual

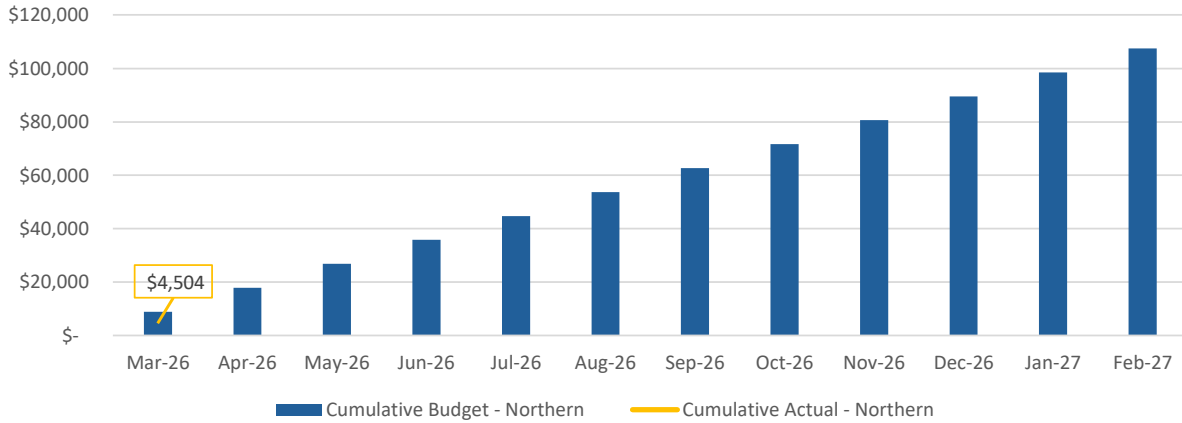


Northern Delta-Mendota Regional Management Committee

Primary Contracts

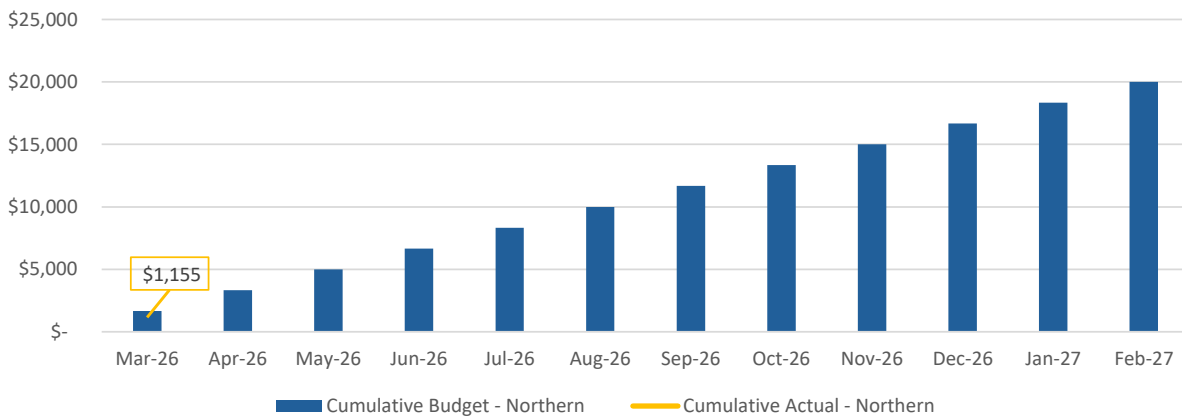
Hallmark Group

FYTD Budget-to-Actual



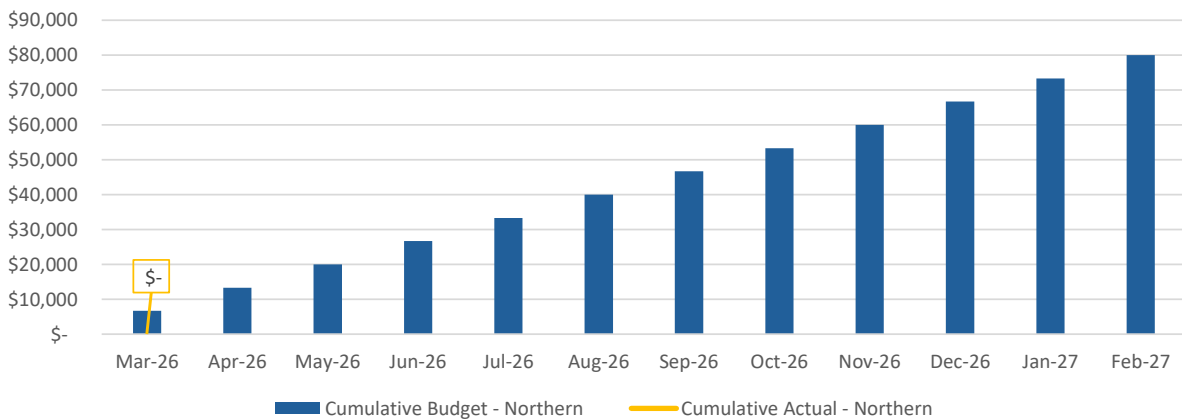
Baker Manock & Jensen

FYTD Budget-to-Actual



EKI Environment & Water

FYTD Budget-to-Actual



Delta-Mendota Subbasin GSAs Joint Powers Authority (JPA)
Accounts Receivable
As of March 31, 2026

Name	Current	1 - 30	31 - 60	61 - 90	91 And Over	Total
Aliso Water District GSA	\$ 76,621	\$ -	\$ -	\$ -	\$ -	\$ 76,621
Central Delta-Mendota GSA	76,621	-	-	-	-	76,621
Farmers Water District GSA	76,621	-	-	-	-	76,621
Fresno County Management Area GSA	76,621	-	-	-	-	76,621
Grassland GSA	76,621	-	-	-	-	76,621
San Joaquin River Exchange CWA GSA	76,621	-	-	-	-	76,621
San Luis & Delta-Mendota Water	-	100,000	-	-	-	100,000
Northern D-M Regional Mgmt Comm						
City of Patterson GSA	7,662	-	-	-	-	7,662
Del Puerto Water District	21,148	-	-	-	-	21,148
Merced County	1,149	-	-	-	-	1,149
Oak Flat Water District	1,839	-	-	-	-	1,839
Patterson Irrigation District GSA	10,727	-	-	-	-	10,727
Stanislaus County	21,837	-	-	-	-	21,837
West Stanislaus Irrigation District GSA	12,259	-	-	-	-	12,259
Total	\$ 536,350	\$ 100,000	\$ -	\$ -	\$ -	\$ 636,350

¹ Domestic Well Mitigation Funds - pending transfer from SLDMWA.

Northern Delta-Mendota Regional Management Committee
Accounts Receivable
As of March 31, 2026

Name	Current	1 - 30	31 - 60	61 - 90	91 And Over	Total
City of Patterson GSA	\$ 20,374	\$ -	\$ -	\$ -	\$ -	\$ 20,374
Del Puerto Water District	56,232	-	-	-	-	56,232
Merced County	3,056	-	-	-	-	3,056
Oak Flat Water District	4,890	-	-	-	-	4,890
Patterson Irrigation District GSA	28,524	-	-	-	-	28,524
Stanislaus County	58,066	-	-	-	-	58,066
West Stanislaus Irrigation District GSA	32,599	-	-	-	-	32,599
Total	\$ 203,741	\$ -	\$ -	\$ -	\$ -	\$ 203,741

Delta-Mendota Subbasin GSAs Joint Powers Authority (JPA)

Accounts Payable

As of March 31, 2026

Name	Current	1 - 30	31 - 60	61 - 90	91 And Over	Total
Baker Manock & Jensen	\$ 7,764	\$ -	\$ -	\$ -	\$ -	\$ 7,764
Hallmark Group	23,300	-	-	-	-	23,300
EKI Environment & Water	13,153	-	-	-	-	13,153
Total	\$ 44,217	\$ -	\$ -	\$ -	\$ -	\$ 44,217

Northern Delta-Mendota Regional Management Committee

Accounts Payable

As of March 31, 2026

Name	Current	1 - 30	31 - 60	61 - 90	91 And Over	Total
Baker Manock & Jensen	\$ 1,155	\$ -	\$ -	\$ -	\$ -	\$ 1,155
Hallmark Group	4,504	-	-	-	-	4,504
Total	\$ 5,659	\$ -	\$ -	\$ -	\$ -	\$ 5,659

Delta-Mendota Subbasin GSAs Joint Powers Authority FY27 Annual Budgets

EXPENDITURES	Combined FY27 Budget	JPA	Northern
Legal Counsel	\$ 150,000	\$ 130,000	\$ 20,000
SGMA Implementation Grant Administration	30,000	30,000	-
Domestic Well Mitigation Funds (Year 2 of 3)	100,000	100,000	-
Program Manager/Executive Director	382,482	275,000	107,482
Technical Consultants	80,000	-	80,000
Annual Report	200,000	125,000	75,000
Data Management System Support	27,500	27,500	-
Outreach Support	35,000	35,000	-
Model Extension	50,000	50,000	-
GSP Implementation Support	250,000	250,000	-
Reserve Fund for GSP Update	100,000	-	100,000
Model Calibration	525,000	525,000	-
Insurance	20,000	20,000	-
Audit	10,000	10,000	-
Startup Costs	15,000	15,000	-
In-House Staff	5,200	5,200	-
Contingency	25,000	-	25,000
Total FY27 Expenditures	\$ 2,005,182	\$ 1,597,700	\$ 407,482
Reserve Funds (Restricted Cash Deposits):			
Domestic Well Mitigation Funds (Year 2 of 3)	100,000	100,000	-
GSP Update - Northern	100,000	-	100,000
Net FY27 Budget	\$ 1,805,182	\$ 1,497,700	\$ 307,482

TO: Board of Directors
Agenda Item No. 5

FROM: Taylor Blakslee, Hallmark Group

DATE: May 19, 2026

SUBJECT: Consider Approving the Proposed Subbasin Model Calibration Phased Approach

Recommendation

Approve the proposed model calibration phased approach contingent on resolution of the funding issue.

Discussion

During the April 13, 2026 DM JPA Board meeting, EKI presented a phased approach to the model update. The Board generally supported a phased approach but requested that the technical ad hoc further review and provide feedback to EKI on the proposed phased approach. The Board directed the ad hoc meeting to include representatives from the seven GSA Groups and a list of participants is included below.

The technical ad hoc met on April 22, 2026 to review and discuss the phased approach. The ad hoc confirmed unanimous support for the phased approach as presented by EKI, which is provided as **Attachment 1 for Board consideration of approval.**

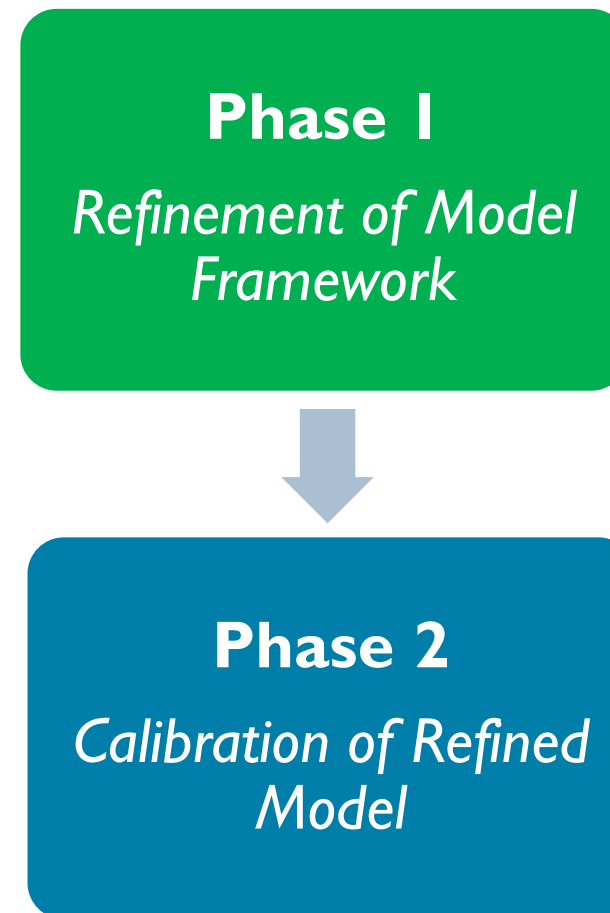
On April 23, 2026, the Central DM GSA Board reviewed and approved the phased approach to the model calibration. On May 4, 2026, the Northern DM Region Management Committee reviewed and approved the phased approach to the model calibration.

Technical Ad Hoc Participants

	GSA Group	Technical Ad hoc
1	Aliso	Joe Hopkins (Director) Ethan Andrews Rick Iger
2	Central	Patrick McGowan
3	Farmers	Jim Stilwell (Director) Will Halligan Andrew Francis
4	Fresno	Will Halligan
5	Grassland	Rick Iger
6	Northern	Adam Scheuber
7	SJREC	John Wiersma (Director) Jarrett Martin (Alternate)

PHASED APPROACH

- Recommending revised phased approach to model calibration
 - 2-year process
 - ~\$200-\$300k per phase
 - Phased approach will ultimately allow for closer alignment between parties on modeling effort
- Proposing to conduct Phase I this year, which includes a reduced scope aimed at refining the model framework



PHASED APPROACH BREAKDOWN

Phase 1

Refinement of Model Framework

- Aimed at refining existing model structure and inputs and developing a local model from regional CVHM2
- Involves refinement of land uses, surface water use, lithology, boundary conditions, land surface water budget, grid, and total groundwater use
- Contingent on receiving clarity on land surface water budget

Deliverable for Phase 1:
Updated framework for model



Phase 2

Calibration of Refined Model

- Includes calibrating the refined model from Phase 1
 - Refining aquifer and subsidence parameters
 - Matching water level and subsidence data
- Contingent on receiving metered data and refined well inventory with locations and screening depths

Deliverable for Phase 2:
Calibrated Model

PHASE 1 APPROACH – TECH AD-HOC RECOMMENDATION

- Discussed phased approach and detailed Phase I scope with Technical Ad-hoc Committee at April ad-hoc meeting
 - No substantive comments or concerns were raised regarding the proposed scope.
 - Tech Ad-Hoc recommendation: JPA approval of the development of a scope of work for Phase I.
- Seeking approval of the Phase I approach to support preparation of a task order for consideration at the June meeting, contingent upon agreement on the cost share.

OBJECTIVE AND PHASE 1 SCOPE

- Define Model calibration objectives and intended Model use to inform scope decisions and Task structure.

Task 1 – Coordination With a Technical Ad-hoc Group (TAG)

- Anticipated Key decision points – Bi-monthly meetings on average:
 - Coordination with neighboring basins and data gathering
 - Define Model platform and temporal and spatial extent, resolution, and layering
 - Review of surface water budgets and well inventory to be implemented in the model
 - Review and approve assumptions related to data gap filling
 - Review and approve calibration plan

Task 2 – Data Review, and Defining Model Platform, Extent, Domain, and Resolution

- Review available datasets, including information developed for the GSP, subsidence data, and newly available data through WY 2025
- Review data from neighboring basins and formalize the model's active domain
- Define Model platform best suited to provide the simulation and representation desired based on availability of data and objectives
- Evaluate and refine model resolution (grid size and layering) to ensure sufficient representation of GSA operations and lithology

PHASE 1 SCOPE (CONT.)

Task 3 – Development of Hydrostratigraphic Framework and Model Structure (Refine Model Grid and Layering)

- Improve Basin Leapfrog Model resolution based on additional data, use publicly available data and CVHM2 to extent to entire model domain
- Implement refined model extent and layering based on Task 2 and enhanced Leapfrog Model
- Improve layer alignment, resolve inconsistencies in aquifer representation, and enhance the differentiation of fine- and coarse-grained materials to support improved simulation of groundwater flow and subsidence
- Address known structural issues such as misrepresentation of hydrogeologic conditions in portions of the Basin

Task 4 – Refinement of Land Surface Inputs and Simulation

- Refine land surface inputs and associated model packages (e.g., FARM, SFR, MNW2) to improve representation of land use, irrigation demand, surface water deliveries, and groundwater pumping.
- Cross check aquifer specific and total estimated pumping from land surface budgets and the current CVHM2 model against available metered data from the GSAs, identify data gaps, and define an approach to improve those estimates as part of this modeling phase.
- Updates will incorporate available data through WY 2025 and will focus on improving the temporal (annual and sub-annual) and spatial representation of recharge, pumping, and return flows within the Basin

PHASE 1 SCOPE (CONT.)

Task 5 – Historical Model Adjustment and Verification

- Construct the historical model to reflect improvements based on Tasks 1-4
- Compare simulated groundwater levels, streamflows, and subsidence to observed data to assess the reasonableness of model inputs and structure prior to calibration
- Model performance will be evaluated using statistical metrics (e.g., RMSE, bias, correlation) and supporting graphical analyses (e.g., hydrographs, scatterplots, and spatial residual maps) to identify areas requiring further refinement

Task 6 – Project Management and Client Coordination

- Provide overall project management, including coordination with the Client and TAG, tracking progress and schedule, and preparing invoices and progress updates

TO: Board of Directors
Agenda Item No. 6

FROM: Taylor Blakslee, Hallmark Group

DATE: May 19, 2026

SUBJECT: Consider Authorizing the Proposed Subbasin Model Calibration Cost Share

Recommendation

Consider authorizing the model calibration cost share.

Discussion

On February 4, 2026, the DM JPA Board ratified the Fiscal Year 2027 Budget and authorized an initial cash call to the GSA Groups for 6-months of costs totaling \$536,350. The Board authorized the execution of a contract with EKI for technical support services with the condition that the “Model Calibration” task (section 3.2) be discussed with the technical ad hoc prior to further Board review.

On February 9, 2026, EKI confirmed that the Board needed to decide by the end of March 2026 if the model calibration should be performed in Fiscal Year 2027 to allow adequate time to perform the work. On February 26, 2026, the technical ad hoc met to discuss the model calibration, and during the March 9, 2026 DM Subbasin JPA Board meeting, after lengthy discussion on the topic, the Board deferred the decision on model calibration to the April 13, 2026 meeting.

During the April 13, 2026 DM JPA Board meeting, EKI presented a phased approach to the model calibration and while the Board generally supported a phased approach, the issue of cost sharing for the model calibration effort was raised. The Board directed staff to convene the budget ad hoc to address the cost share issue for the proposed model calibration and future technical basin-wide work. The Board directed the ad hoc meeting to include representatives from the seven GSA Groups and a list of participants is included below:

	GSA Group	Budget Ad hoc
1	Aliso	Joe Hopkins (Director)
2	Central	Chase Hurley (Director)
3	Farmers	Will Halligan
4	Fresno	Auggie Ramirez (Director)
5	Grassland	Ellen Wehr
6	Northern	Bobby Peirce
7	SJREC	<i>None</i>

The budget ad hoc met on April 21, 2026, and developed several cost share options for Board consideration which are **provided as Attachment 1**. The Budget ad hoc agreed that the existing 1/7th cost share and the acreage-based cost share options (A and B) were not likely to receive consensus from the DM JPA Board and the additional four options presented intend to span the range between a pure per entity and per acreage approach. The ad hoc also discussed a minimum floor and maximum ceiling percentage for each participating member. The ad hoc discussed the potential impact on future technical costs but noted there was a lack of clear understanding of what constitutes a technical cost. While the direction was to consider cost share for the current, proposed model calibration and future technical basin-wide work, some urged the focus to remain on the current model calibration.

Staff is seeking Board direction on the cost share for the proposed model calibration.

Model Calibration Cost Share Options

Model Calibration cost (est.) \$ 500,000

Reference Data:						
	WY 25 Pumping	Acres	AF/ac	AF/ac %		
1	SJREC	114,366	0.39	6%		
2	Central	163,787	0.11	2%		
3	Northern	37,708	0.25	4%		
4	Grassland	18,119	0.17	3%		
5	Aliso	73,900	2.77	40%		
6	Fresno	12,273	0.55	8%		
7	Farmers	5,800	2.62	38%		
		280,607	762,502	6.87		

GSA Group	A			B			C		
	A: 1/7th Cost Share			B: Acreage-Based			C: Hybrid: Entity + Acreage		
	Cost	Percent	Cost	Percent	Cost	Per Entity	Per Acre	Cost	Percent
1	\$ 71,429	14.3%	\$ 190,864	38.2%	\$ 35,714	\$ 95,432	\$ 131,146	26.2%	
2	\$ 71,429	14.3%	\$ 107,401	21.5%	\$ 35,714	\$ 53,701	\$ 89,415	17.9%	
3	\$ 71,429	14.3%	\$ 99,764	20.0%	\$ 35,714	\$ 49,882	\$ 85,596	17.1%	
4	\$ 71,429	14.3%	\$ 68,286	13.7%	\$ 35,714	\$ 34,143	\$ 69,857	14.0%	
5	\$ 71,429	14.3%	\$ 17,466	3.5%	\$ 35,714	\$ 8,733	\$ 44,447	8.9%	
6	\$ 71,429	14.3%	\$ 14,767	3.0%	\$ 35,714	\$ 7,383	\$ 43,098	8.6%	
7	\$ 71,429	14.3%	\$ 1,452	0.3%	\$ 35,714	\$ 726	\$ 36,440	7.3%	
Total	\$ 500,000	100%	\$ 500,000	100%	\$ 250,000	\$ 250,000	\$ 500,000	100%	

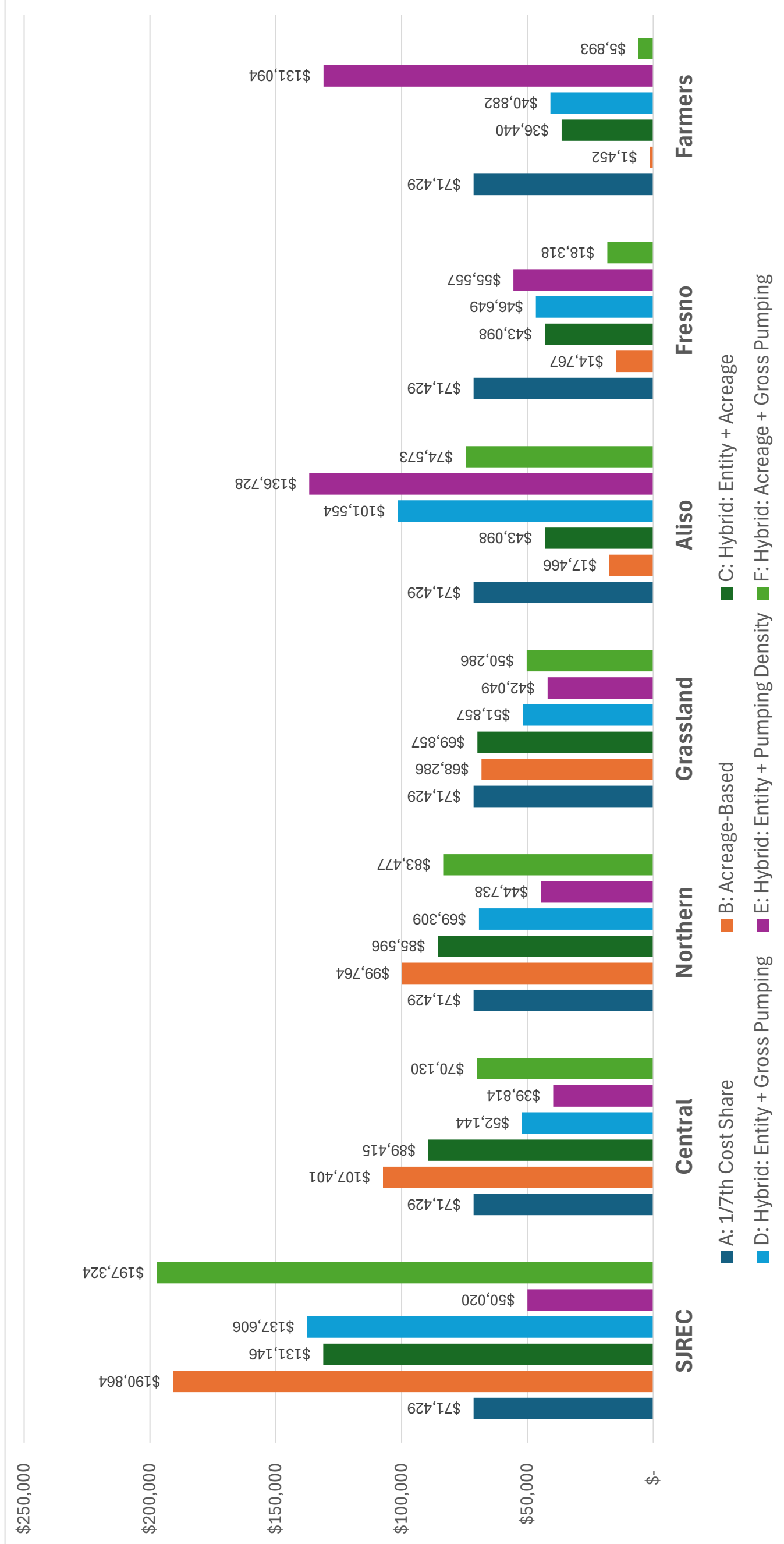
GSA Group	D			E			F			
	D: Hybrid: Entity + Gross Pumping			E: Hybrid: Entity + Pumping Density			F: Hybrid: Acreage + Gross Pumping			
	Per Entity	Gross Pumping	Cost	Per Entity	Pumping Density	Cost	Per Acre	Gross Pumping	Cost	Percent
1	\$ 35,714	\$ 101,892	\$ 137,606	\$ 35,714	\$ 14,306	\$ 50,020	\$ 95,432	\$ 101,892	\$ 197,324	39.5%
2	\$ 35,714	\$ 16,430	\$ 52,144	\$ 35,714	\$ 4,099	\$ 39,814	\$ 53,701	\$ 16,430	\$ 70,130	14.0%
3	\$ 35,714	\$ 33,595	\$ 69,309	\$ 35,714	\$ 9,024	\$ 44,738	\$ 49,882	\$ 33,595	\$ 83,477	16.7%
4	\$ 35,714	\$ 16,143	\$ 51,857	\$ 35,714	\$ 6,335	\$ 42,049	\$ 34,143	\$ 16,143	\$ 50,286	10.1%
5	\$ 35,714	\$ 65,839	\$ 101,554	\$ 35,714	\$ 101,014	\$ 136,728	\$ 8,733	\$ 65,839	\$ 74,573	14.9%
6	\$ 35,714	\$ 10,934	\$ 46,649	\$ 35,714	\$ 19,843	\$ 55,557	\$ 7,383	\$ 10,934	\$ 18,318	3.7%
7	\$ 35,714	\$ 5,167	\$ 40,882	\$ 35,714	\$ 95,380	\$ 131,094	\$ 726	\$ 5,167	\$ 5,893	1.2%
Total	\$ 250,000	\$ 250,000	\$ 500,000	\$ 250,000	\$ 250,000	\$ 500,000	\$ 250,000	\$ 250,000	\$ 500,000	100%

Cost Contribution By Entity

	SJREC	Central	Northern	Grassland	Aliso	Fresno	Farmers
A A: 1/7th Cost Share	\$ 71,429	\$ 71,429	\$ 71,429	\$ 71,429	\$ 71,429	\$ 71,429	\$ 71,429
B B: Acreage-Based	\$ 190,864	\$ 107,401	\$ 99,764	\$ 68,286	\$ 17,466	\$ 14,767	\$ 1,452
C C: Hybrid: Entity + Acreage	\$ 131,146	\$ 89,415	\$ 85,596	\$ 69,857	\$ 43,098	\$ 43,098	\$ 36,440
D D: Hybrid: Entity + Gross Pumping	\$ 137,606	\$ 52,144	\$ 69,309	\$ 51,857	\$ 101,554	\$ 46,649	\$ 40,882
E E: Hybrid: Entity + Pumping Density	\$ 50,020	\$ 39,814	\$ 44,738	\$ 42,049	\$ 136,728	\$ 55,557	\$ 131,094
F F: Hybrid: Acreage + Gross Pumping	\$ 197,324	\$ 70,130	\$ 83,477	\$ 50,286	\$ 74,573	\$ 18,318	\$ 5,893

Percent Contribution By Entity

	SJREC	Central	Northern	Grassland	Aliso	Fresno	Farmers
A A: 1/7th Cost Share	14.3%	14.3%	14.3%	14.3%	14.3%	14.3%	14.3%
B B: Acreage-Based	38.2%	21.5%	20.0%	13.7%	3.5%	3.0%	0.3%
C C: Hybrid: Entity + Acreage	26.2%	17.9%	17.1%	14.0%	8.9%	8.6%	7.3%
D D: Hybrid: Entity + Gross Pumping	27.5%	10.4%	13.9%	10.4%	20.3%	9.3%	8.2%
E E: Hybrid: Entity + Pumping Density	10.0%	8.0%	8.9%	8.4%	27.3%	11.1%	26.2%
F F: Hybrid: Acreage + Gross Pumping	39.5%	14.0%	16.7%	10.1%	14.9%	3.7%	1.2%



TO: Special Board of Directors
Agenda Item No. 6a

FROM: Taylor Blakslee, Hallmark Group

DATE: May 19, 2026

SUBJECT: Consider Authorizing EKI to Develop and Submit a USBR WaterSMART Applied Science Grant Application to Partially Fund the Model Calibration

Recommendation

Consider authorizing EKI to develop and submit a grant application for the USBR WaterSMART Applied Science Grant Application to partially fund the model calibration costs for an amount not to exceed of \$30,000.

Discussion

On March 5, 2026, the U.S. Bureau of Reclamation (USBR) announced the WaterSMART Applied Science Grants opportunity which supports modeling, forecasting, and data accessibility projects that help improve water delivery, enhance water supply forecast skill, and improve drought management throughout the state.

EKI identified this grant opportunity which may provide up to 50% of the total proposed costs, up to \$400,000, for the model calibration. A proposed scope of work for EKI to develop and submit a grant application is provided as **Attachment 1** and totals \$30,000. While this cost is not directly listed in the current Fiscal Year 2027 budget, this cost could be absorbed in the in budgeted model calibration budget line item of \$525,000 since under the phased approach ~\$300,000 is anticipated to be spent in Fiscal Year 2027.

Key Grant Application Considerations:

- The grant application is due July 8, 2026.
- Awards not likely announced until late 2026, early 2027.
- Need to identify local water district as a grant applicant (previous WaterSMART award preferred and active SAM account).
- 50% non-federal cost share is required.
- A successfully awarded grant will fund projects now.

A summary of the grant opportunity is provided as **Attachment 2**.

11 May 2026

Taylor Blakslee
Delta-Mendota Subbasin Joint Powers Authority/Hallmark Group Capital Project Management
4900 California Avenue,
Tower B, 2nd Floor
Bakersfield, CA 93309

Subject: Proposal to support grant application development for the Delta-Mendota Subbasin Joint Powers Authority Groundwater Flow Model (EKI C50346.04)

Dear Mr. Blakslee:

EKI Environment & Water, Inc. (EKI) is pleased to submit this proposal to provide grant application development support services to the Delta-Mendota Subbasin (Basin) Joint Powers Authority (JPA, Client) for the Bureau of Reclamation's WaterSMART Applied Science Grants Program.

PROJECT UNDERSTANDING

The JPA intends to pursue funding through the Bureau of Reclamation's WaterSMART Applied Science Grants Program for refinement and calibration of the Basin's existing Groundwater Sustainability Plan (GSP) groundwater flow model (Model) to support its compliance with the Sustainable Groundwater Management Act (SGMA).

The proposed project will result in a calibrated model to simulate groundwater levels and subsidence within the Basin. While the project is anticipated to be completed in two phases over a two-year period, the grant application will present the effort as a single integrated project that aligns with program requirements, including clearly describing the water management challenges, technical approach, and expected outcomes. The application may also include additional potential tasks proposed by EKI and approved by the JPA, such as visualization and decision support tools, including integration with the Basin's dashboard, to increase overall project value and strengthen the competitiveness of the application for award consideration.

SCOPE OF WORK

Task 1 – WaterSMART Applied Sciences Grant Application Development

EKI will assist the JPA with preparation and submittal of a grant application under Reclamation's WaterSMART Applied Science Grants Program (Funding Opportunity No. R25AS00280) to support development of a "groundwater modeling and decision-support tool". The application will be developed for the 8 July 2026 application deadline and will be based on the proposed updates to the GSP Model.

As part of this task, EKI will review the Notice of Funding Opportunity (NOFO) and application requirements and work with the JPA to confirm the proposed project scope, funding request, cost-share approach, and overall grant application strategy.

Technical Proposal. EKI will prepare the technical proposal, including the project description, project location, water management challenge, proposed approach, expected benefits, and responses to the applicable evaluation criteria. The technical proposal will describe how the project will support groundwater management, forecasting and scenario evaluation, GSP implementation, Projects and Management Action (PMA) evaluation, and improved access to model results for management and policy decisions.

Project Work Plan and Schedule. EKI will develop a grant-level work plan and schedule describing the proposed project tasks, anticipated milestones, and implementation period. The schedule will reflect the anticipated timing of the phased GSP Model refinement and calibration, as well as the expected timing of the grant award.

Budget Narrative. EKI will prepare a budget narrative describing the total project cost, requested federal funding, non-federal cost share, and requested pre-award costs.

Federal Forms and Application Materials. EKI will support the preparation of the required federal forms and application materials, based on information provided by the JPA. EKI understands that the JPA may determine a member agency to submit the application on behalf of the JPA. The designated entity will be responsible for completing required registrations, maintaining access to SAM.gov and Grants.gov, executing required forms, and providing any official certifications or authorizations. EKI assumes similar responsibilities and assumptions would apply to the designated member agency and that this arrangement would not require an additional level of effort from EKI.

Supporting Materials. EKI will compile or prepare limited supporting materials needed for the application, such as summary figures, project descriptions, cost-share summaries, and other available materials that support the technical proposal. EKI will also support draft language for letters of support or partner coordination materials, if needed.

EKI will prepare a draft grant application package for the JPA review. EKI assumes one consolidated review by the JPA and one revision cycle prior to finalization. After the JPA approval, EKI will finalize the application package and support electronic submittal through Grants.gov.

EKI will also provide project management and coordination throughout the application development process, including check-in calls or emails, tracking of application components, and coordination with the JPA regarding information needed to complete the application.

Assumptions:

- The designated entity (e.g. the JPA or a member agency within the Basin) will provide access to EKI as a participant for grant submittal if such support is requested.
- The JPA will coordinate and transmit letters of support to appropriate entities for their signature.

- If selected, prior to award, The JPA will provide: (1) an official resolution, and (2) third-party cost share letters of commitment if cost-share funding is anticipated to be provided by a source other than the JPA.
- EKI assumes that one (1) coordination call with the JPA's Technical Ad Hoc Committee will be required as part of Task 1 to discuss the Proposed Work Plan component of the application.
- EKI assumes that one (1) coordination call with the JPA will be required following completion of the Final application materials and forms to obtain approval prior to submission.
- Calls will be no more than one (1) hour in duration and held virtually in accordance with a mutually agreeable schedule.
- The designated entity (e.g. the JPA or a member agency within the Basin) will complete and maintain all required SAM.gov and Grants.gov registrations.
- EKI assumes one consolidated review cycle by the JPA.

Deliverables:

- Application tracking checklist;
- Draft and Final application materials and forms;
- Final Application package; and
- Confirmation of application electronic submittal via Grants.gov, if submitted by EKI.

COMPENSATION

Compensation for consulting services by EKI will be on a fixed fee basis. Based on the proposed SOW described above, we propose a budget of \$30,000 for the performance of Tasks 1 above, which will not be exceeded without additional authorization from the Client.

PROJECT SCHEDULE

We are prepared to begin work immediately upon receipt of authorization to proceed and complete the submittal by grant application deadline on 8 July 2026. Due to the complexity of grant application, EKI requires authorization at least six weeks prior to the deadline. Registration on SAM.gov and Grants.gov should be pursued separately, as soon as possible, and by the JPA or another designated member agency within the Basin.

TERMS AND CONDITIONS

All work performed by EKI under this proposal will be pursuant to the Terms and Conditions of our existing Agreement with the JPA, executed on 24 February 2026. A separate agreement will be needed if a member agency is designated by the JPA to pursue the grant.

Taylor Blakslee
Delta-Mendota Subbasin Joint Powers Authority
11 May 2025
Page 4 of 4



If you approve of this Agreement, please sign where noted below and return a fully executed copy to confirm authorization to proceed. We look forward to working with you on this project. Please do not hesitate to contact us with any questions.

Very truly yours,

EKI Environment & Water, Inc.

A handwritten signature in blue ink, appearing to read 'Anona L. Dutton', with a long horizontal flourish extending to the right.

Anona L. Dutton, PG, CHg
Chief Executive Officer

AUTHORIZATION

Delta-Mendota Subbasin Joint Powers Authority

By _____

Title _____

Date _____

USBR GRANT OPPORTUNITY

- USBR WaterSMART: Applied Science Grant
 - Total program funding: \$6 million
 - Max award per project: \$400,000
 - Non-Federal cost share: 50% minimum
 - Project duration: 2 years
 - Expected awards: ~20 total (~7-15 per round)
 - Project types: **Modeling** · Forecasting · Snow Data · Data/Tools
 - Eligible Applicants
 - Category A: Water districts, states, tribes (Western US)
 - Category B: Universities/nonprofits + Category A partner letter

- Applications must be submitted through Grants.gov, and applicant must have an active SAM.gov account
 - Registration can take several months > *Contingent on a registered entity stepping up to act as the grant applicant*

- EKI has prepared a Scope of Work for grant application support (included in board packet)

Grants.gov Home Search About Community Sign in

WaterSMART: Applied Science Grants

[Save](#)

Agency: Bureau of Reclamation

Assistance Listings: 15,557 -- Applied Science Grants

Last Updated: March 6, 2026 [View version history on Grants.gov](#)

Description [Jump to all documents](#)

Through WaterSMART, the Bureau of Reclamation (Reclamation) leverages Federal and non-Federal funding to work cooperatively with States, Tribes, and local entities as they plan and implement actions to increase water supply and hydropower reliability. The WaterSMART Program demonstrably advances Trump administration priorities, such as those identified in Presidential Executive Order 14154 (January 20, 2025): Unleashing American Energy (E.O. 14154) and Secretarial Order 3418, and aligns with other priorities and requirements, such as those identified in Presidential Executive Order 14332 (August...

[View on Grants.gov](#)

Key Dates

NOFO Posted:	March 5, 2026
Round 1 Application Due:	July 8, 2026 (5:00 PM MDT)
ARC Review:	Aug – Nov 2026 (12–14 weeks)
Selections Announced:	December 2026
Pre-Award Phase:	Jan – Mar 2027 (8–15 weeks)
Round 1 Award:	July 2027
Round 2 Application Due:	April 13, 2027 (5:00 PM MDT)
Round 2 Award:	April 2028

Closing: July 8, 2026

First application July 8, 2026, at 5:00pm MDT
Second application: April 13, 2027, 5:00PM MDT

Application process
This site is a work in progress. Go to www.grants.gov to apply, track application status, and subscribe to updates.

TO: Board of Directors
Agenda Item No. 7

FROM: Karlee Liddy, Hallmark Group

DATE: May 19, 2026

SUBJECT: Consider Approving the Groundwater Monitoring Guidance Document

Recommendation

Approve the guidance document for groundwater monitoring.

Discussion

On December 12, 2026, the DM Coordination Committee approved the development of a guidance document for groundwater monitoring to maintain accountability and ensure consistent QA/QC of data before it is entered into the DMS. Kait Palys (INTERA) drafted the guidance document and gained input from EKI. A draft of the guidance document was shared with the DM Subbasin JPA technical ad hoc committee for consideration on February 26, 2026. Staff received feedback from the ad hoc on March 20, 2026, and solicited further comment and feedback from the full DM Subbasin JPA Board on April 13, 2026.

Staff incorporated all comments and edits into the final draft of the Groundwater Monitoring Guidance Document, which is provided as **Attachment 1** for consideration of approval.

TO: Special Board of Directors
Agenda Item No. 8

FROM: Taylor Blakslee, Hallmark Group

DATE: May 19, 2026

SUBJECT: Update on the Domestic Well Mitigation Policy Briefing Workshop

Recommendation

None; Information only.

Discussion

On August 11, 2025, the Coordination Committee requested the Delta-Mendota Subbasin Groundwater Sustainability Agencies (GSAs) adopt the domestic well mitigation policy, which was done by each GSA.

Outreach commitments outlined in the domestic well mitigation policy and options for additional outreach were presented to the Coordination Committee on October 13, 2025, and the Committee directed outreach consultant Lisa Beutler to implement the first four outreach items (press release, newsletter, posting informational flyers, and coordinating the translation of those fliers for online access). On December 12, 2025, the Coordination Committee directed staff to plan a domestic well mitigation policy workshop in Spring of 2026.

Staff worked with Ms. Beutler to schedule the domestic well mitigation policy workshop which is currently being planned for the first week of June 2026. The draft presentation for the domestic well mitigation program is provided as **Attachment 1**, and the draft mitigation application is provided as **Attachment 2**. These documents are draft and will be finalized with the Communications subcommittee.

Delta-Mendota Subbasin Domestic Well Mitigation Program

A Public Guide to Protecting Your Drinking Water

www.deltamendota.org

| Adopted 2025

| Delta-Mendota Subbasin Joint Powers Authority



Domestic Well Owners



Protection Under SGMA



Mitigation Assistance



Safe Drinking Water

Background: SGMA & the Delta-Mendota Subbasin



What is SGMA?

The Sustainable Groundwater Management Act (2014) requires local agencies to bring overdrafted groundwater basins into balance by 2040. Medium- and high-priority basins must develop and implement Groundwater Sustainability Plans (GSPs).



Groundwater Sustainability Agencies (GSAs)

23 GSAs formed across the Delta-Mendota Subbasin are responsible for implementing SGMA. They coordinate under a single GSP adopted in November 2024 and report jointly through the Delta-Mendota Subbasin GSAs JPA.

Delta-Mendota Subbasin

~1,200 Square miles

21 Groundwater Sustainability Agencies

4 Counties: Fresno, Madera, Merced, Stanislaus

2024 Single GSP adopted by all GSAs

2015 Minimum Threshold baseline year

Background: SGMA & the Delta-Mendota Subbasin

1

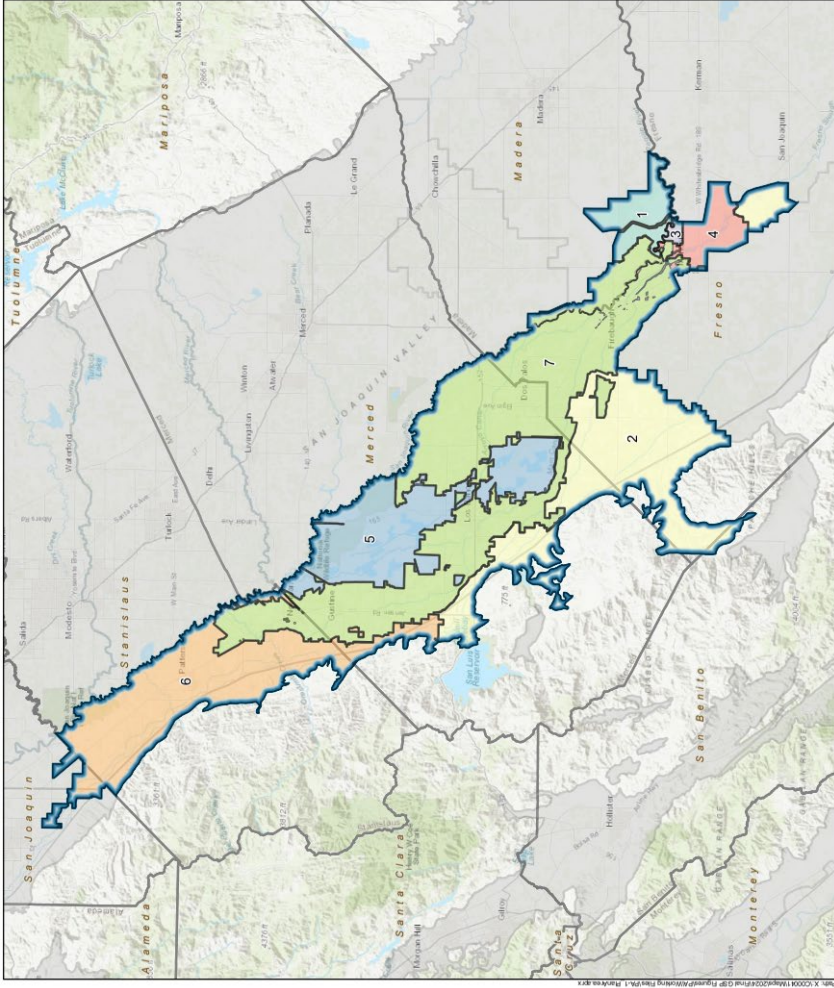
Subbasin

7

GSA Groups

21

Groundwater Sustainability Agencies



What Is This Program?



SGMA & Your Well

The Sustainable Groundwater Management Act (SGMA) requires local Groundwater Sustainability Agencies (GSAs) to manage groundwater sustainably — balancing supply and demand to avoid "undesirable results."



Who Is Protected?

Domestic well owners and small water systems (≤ 14 connections) using groundwater for drinking water are the primary focus of this Policy — the people most vulnerable to groundwater level changes.



Our Commitment

GSAs are committed to keeping groundwater levels above 2015 historic lows. This program ensures that any eligible residential wells that are impacted by groundwater levels or quality due to GSA actions are protected.

By the Numbers

~2,890

Wells in the Subbasin

~3/yr

Wells projected to need help annually

24 hrs

Emergency water response target

72 hrs

Hauled (tanked) water delivery target, if needed/approved

Two Program Components – ORIGINAL COPY

The Domestic Well Mitigation Policy addresses two distinct types of well impacts:



Component 1

Dry Well / Groundwater Level

Issue: Well goes dry or is at imminent risk of going dry due to groundwater level decline from GSA management actions

Short-Term Solutions: Bottled water within ~24 hrs of a complete application; temporary water tank within 72 hrs if needed/eligible

Long-Term Solutions: Pump lowering, well deepening, new well installation, or connection to a community water system

Funding: Funds reserved by subbasin for mitigation program. Implemented mitigation measures to be paid by local GSA



Component 2

Groundwater Quality (GWQ)

Issue: Domestic wells that exceed water quality thresholds under specific conditions for the following constituents:

- Nitrate
- Gross Alpha
- Chromium VI
- Arsenic, 1,2,3-TCP

Short-Term Solutions: Bottled water within ~24 hrs of a complete application; temporary water tank within 72 hrs if needed/eligible

Long-Term Solution: Point-of-use reverse osmosis system (up to \$2,500/well + 3 years of filter replacements), or other agreed alternative

Funding: Funds reserved by subbasin for mitigation program. Implemented mitigation measures to be paid by local GSA

Both components follow the same 4-step process: Notify → Apply → Review → Mitigate, and both include the right to appeal to the DM **Page 45**
GSAs JPA Board.

Who is Eligible? Dry Well / Groundwater Level



ELIGIBLE — You MAY Qualify If:

- ✓ You use groundwater for domestic health and safety purposes
- ✓ Your well was in place as of November 19, 2024 (GSP adoption date)
- ✓ You participate (or agree to participate) in your GSA's Well Registration Program
- ✓ You consent to a field investigation by the GSA
- ✓ Your well went dry or is at imminent risk due to groundwater level decline from GSA management actions



NOT ELIGIBLE — Does Not Apply If:

- ✗ Well was installed after November 19, 2024
- ✗ Well screen interval is shallower than Minimum Threshold levels
- ✗ Well failure is due to pump failure, clogged screens, or mechanical issues unrelated to water level decline
- ✗ Well failure is due to normal wear and tear based on age
- ✗ Applicant refuses to consent to GSA field investigation

Who is Eligible? Groundwater Quality Impacts



ELIGIBLE — You MAY Qualify If:

- ✓ You use a domestic/residential groundwater well serving no more than 14 service connections
- ✓ Your well was in place as of November 19, 2024 (GSP adoption date)
- ✓ You participate (or agree to participate) in your GSA's Well Registration Program
- ✓ You consent to a field investigation by the GSA
- ✓ You experience water quality degradation beyond Minimum Thresholds caused by GSA projects
- ✓ Nitrate, Gross Alpha, Chromium VI, Arsenic, and TCP-123 exceedances caused by GSA actions



NOT ELIGIBLE — Does Not Apply If:

- ✗ Well installed after November 19, 2024
- ✗ Well screen interval is shallower than Minimum Threshold levels
- ✗ Well is in an area already designated with degraded water quality by the GSA
- ✗ Applicant refuses to consent to GSA field investigation
- ✗ Impact not causally linked to GSA projects or management actions (determined by qualified technical analysis)

The 4-Step Mitigation Process



Step 1: How You'll Hear About This Program



Subbasin Website

Full program details, application form, and electronic submission available at www.deltamendota.org. GSAs may also host info or link to the subbasin site.



Public Meetings & Briefings

Policy status discussed at quarterly DM JPA Board meetings and semi-annual GSA board meetings. Informational sessions like this one will be recorded and posted online.



Regular Program Review

Implementation discussed at least quarterly by the DM JPA Board. Policy reviewed every 5 years. Annual reporting keeps the public informed.

Minimum Threshold Alert

If a monitoring well reading exceeds groundwater level or quality Minimum Thresholds (set at 2015 levels) due to GSA actions, GSAs *may* contact well owners within a 3-mile radius.

Notice will include:

- Details on the MT exceedance
- Information about this Policy
- How and where to file a claim
- Contact information for your GSA

Program Point of Contact

Karlee Liddy (Primary Contact) | (916) 767-4287, kliddy@hgcpm.com
Taylor Blakslee | (661) 477-3385, tblakslee@hgcpm.com

Step 2: Submitting Your Application

What the Application Asks For (Available at www.deltamendota.org)

Applicant Contact Info

- First & Last Name
- Mailing Address
- Phone & Email
- Relationship to property (if not owner)

Supporting Documents

- County Well Permit (if available)
- Previous water quality reports
- Any well maintenance records

Well Information

- Well address & county
- Parcel Number (APN)
- Well age, depth, casing size
- Number of homes served
- Description of the issue

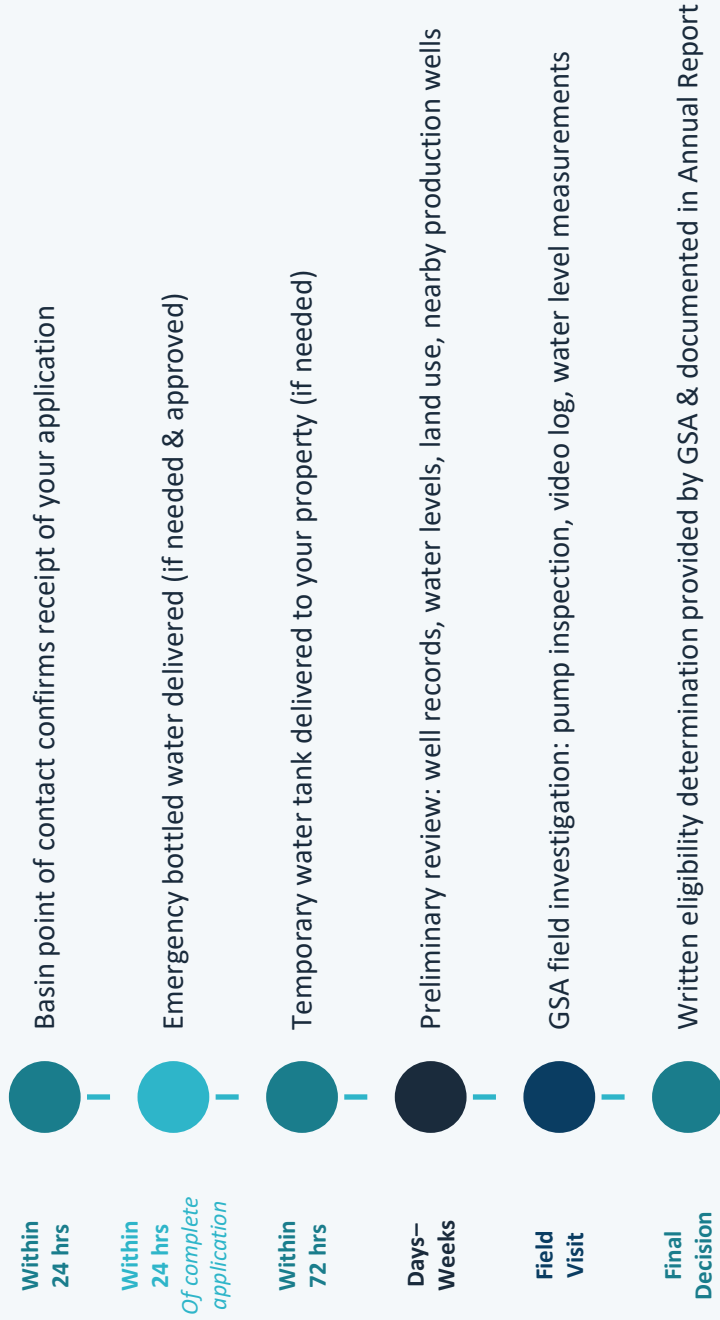
Emergency Water Request

- Check Yes/No for emergency water
- Indicate household size
- GSA will respond within 24 hrs
- Tank delivery within 72 hrs if needed



Important: By submitting, you consent to a GSA field investigation. Refusing consent voids your application.

Step 3: GSA Eligibility Review



A well may be found INELIGIBLE if:

- X Pump failure
- X Clogged screens
- X Casing failure (unrelated to water levels)
- X Maintenance issue unrelated to GSA actions
- X Normal age-related wear & tear

Step 4: Mitigation Measures | Dry Well / Groundwater Level

Possible Mitigation Options:



Lower or Modify Pump

Adjust pump intake depth or equipment to reach water at lower levels



Deepen the Well

Drill deeper if the well has an open bottom to reach water-bearing zones



Install a New Well

Replace the existing well with a new well meeting current state & county standards



Connect to Water System

Facilitate connection to an existing municipal or community water system, if feasible



Step 4: Mitigation Measures | Groundwater Quality Impacts

Possible Mitigation Options:



Point-of-Use Treatment

Up to \$2,500 per well and three years of filter replacements for a point-of-use reverse osmosis system or other agreed alternative



Alternative Options

Other mutually agreed upon alternatives for up to \$2,500 per well



Additional Resources & Support

Other programs that may assist well owners, especially for rural domestic wells:

Self Help Enterprises

Free water sustainability services including tank water access, domestic well repair/replacement, and system connections. Income-eligible households in the San Joaquin Valley.

 1-559-802-1865  selfhelpenterprises.org

CV-SALTS Management Zones

Addresses nitrate and TDS water quality impacts. Phase II will include the Delta-Mendota Subbasin. Offers well testing, interim water supply, and water filling stations.

 centralvalleywaterboard.ca.gov

SAFER Program (State Water Board)

Safe and Affordable Funding for Equity and Resilience. Provides interim water supplies, emergency repairs, technical assistance, planning, O&M, and construction funding.

 waterboards.ca.gov

CA Office of Emergency Services

Contact your County Office of Emergency Services to begin seeking assistance with dry wells. Also see DWR's 'Be Well Prepared' website for well maintenance resources.

 caloes.ca.gov

Questions?

We're here to help protect your water supply.



Subbasin Website

www.deltamendota.org

Applications, policy documents, GSA map,
recorded sessions



Apply for Mitigation

Submit Online or by Mail

Find your GSA on the website, then submit
directly to them



Self Help Enterprises

1-559-802-1865

Free assistance for income-eligible households

Attachment 2

DELTA-MENDOTA GROUNDWATER SUBBASIN

Domestic Well Mitigation Claim — Application Form **DRAFT**

Pursuant to the Subbasin Domestic Well Mitigation Policy (2025) and SGMA

Before you begin: This form is for domestic well owners whose well has gone dry or is in imminent threat of going dry, or is experiencing water quality impacts, due to groundwater level changes resulting from GSA management actions. Wells installed after **November 19, 2024** may have limited eligibility. Emergency bottled water can be requested immediately upon submission of a complete application. Submit to the applicable GSA or electronically at www.deltamendota.org.

1. Applicant & Property Information

REQUIRED

First name *

Last name *

Mailing address *

City, state, ZIP *

Daytime phone *

Email address

WELL / PARCEL LOCATION

Property address (if different from above) *

Assessor parcel number (APN)

County *

Applicable GSA *

GPS coordinates (optional)

Are you the landowner of record? *

Yes No — tenant / authorized representative

If representative: landowner name and authorization

2. Well Construction & Registration

REQUIRED

DWR Well Completion Report (WCR) number

Year well was installed *

Well type *

Individual domestic (single household) / Small water system (≤14 connections) / Other

Found on original well permit, if available

Total well depth (ft)

Pump intake depth (ft)

Screen interval depth (ft)

Casing / pipe material

Aquifer

Is this well registered with your GSA's well registration program? *

Yes No No program in my GSA Unknown

Registration is required for eligibility where a GSA program exists (Policy § Eligibility)

Was this well in use for domestic supply on or before November 19, 2024? *

Yes No

REQUIRED

3. Reported Impact & Claim Type

Type of impact being claimed (check all that apply) *

- Well has gone completely dry (no water produced)
- Well is producing significantly reduced water (imminent threat of going dry)
- Water quality degradation beyond acceptable levels

Date issue was first noticed *

Date of most recent normal well operation

Description of the impact *

WATER QUALITY DETAILS (COMPLETE IF WATER QUALITY IMPACT CLAIMED)

Contaminants of concern (check all that apply):

- Gross Alpha
- Arsenic
- Other
- Nitrate
- Chromium VI
- 1,2,3-Trichloropropane (TCP)

Date of most recent water quality test (if available)

Attach water quality test results: file name / description

Is emergency drinking water supply needed immediately? *

- Yes — no potable water
- Partial — limited supply
- No — can wait

GSA commits to providing bottled water within 24 hours of a complete application for households with no water

REQUIRED

4. Well Maintenance & Performance History

Date of last well maintenance or inspection

Name of well service contractor (if applicable)

Has the well experienced any previous issues or repairs? *

- Yes
- No

If yes, describe previous issues and repairs (include dates and contractor)

Recent changes in well use or nearby land use (if any)

e.g., added irrigation, nearby agricultural well drilling, land use changes

List any maintenance records or pump test results being attached

RECOMMENDED

5. Supporting Documentation

The GSA's preliminary review will examine well construction records, pump maintenance records, historic water level data, nearby production well information, and nearby land use. Providing the following documents will expedite your review.

- Original Well Completion Report (WCR)
- Most recent water bill or utility records
- Water quality test results
- Pump installation or modification records
- Photographs of well, pump, and any visible issues
- Well service / repair invoices

■ **County well permit (if applicable)**

List additional documents being attached (file names or description)

Additional comments or information for the GSA to consider

6. Field Investigation Consent & Release

REQUIRED

The Domestic Well Mitigation Policy requires applicants to consent to a field investigation and execute a release as a condition of eligibility. **Failure to consent voids this application.** The field investigation may include: removing the pump to measure intake depth and static water level, conducting a video log, modifying the wellhead, and investigating the site for consolidation feasibility and nearby land and water use. Should a new well be installed as a mitigation measure, the GSA may request to convert the abandoned well into a monitoring well; this will be addressed in a separate Mitigation and Indemnification (MI) Agreement.

- I consent to a field investigation and site inspection by the applicable GSA or its authorized representative, and agree to execute an appropriate release document. *
- I agree to provide site access to GSA staff or authorized contractors to conduct the investigation. *
- I understand that a Mitigation and Indemnification (MI) Agreement must be signed before any mitigation work (other than emergency water supply) begins.
- I agree to participate in the GSA's well registration program if one exists or is developed for my area, as required for ongoing eligibility.
- I certify that the information provided in this application is true and accurate to the best of my knowledge. *

APPLICANT SIGNATURE **Landowner Contact Information and Signature**

Signature (sign above line) *

Date *

Printed name *

Other Resources

Self Help Enterprises: Water sustainability program (tank access, well repair/replacement, connections) — free, income-based. 1-559-802-1865 | selfhelpenterprises.org **CA OES:** Contact your County Office of Emergency Services. **SWRCB SAFER Program:** Interim drinking water supplies and emergency repairs. **DWR "Be Well Prepared":** water.ca.gov

TO: Board of Directors
Agenda Item No. 9

FROM: Karlee Liddy, Hallmark Group

DATE: May19, 2026

SUBJECT: Update on Houston Engineering Improvements to the Data Management System

Recommendation

None; Information only.

Discussion

In June 2025, and in preparation for the Fiscal Year 2027 budget development, Woodard & Curran worked with Houston Engineering to develop a list of potential data management system (DMS) enhancements and associated costs. The Fiscal Year 2027 budget was approved by the Delta-Mendota Subbasin which included approximately \$12,000 for potential DMS enhancements.

During the March 19, 2026, technical ad hoc meeting, the ad hoc provided a recommendation on which DMS enhancements to implement (totaling ~\$9,000) and is provided as **Attachment 1**.

The Central DM GSA Board and the Northern DM Region Management Committee reviewed and approved the DMS enhancements that were recommended by the technical ad hoc during their meetings on April 23 and May 4, 2026, respectively.

Proposed Improvements to the Delta-Mendota Subbasin Data Management System - 2026

Item No.	Improvement Description (blue text = added detail/ refined scope from tech ad hoc)	Cost	Tech Ad Hoc Recommendation 3/19/2026
1	Identifier for proxy data collected with different symbology displayed on hydrograph or chemograph	\$2,154	Implement
2	DMS accounts for each GSA representative/agency responsible for monitoring wells with permission to upload data (Separate out Northern and Central GSA groups, with respective participants)	\$2,200	Implement
3	Email reminders to specific well contacts to upload data by designated date (i.e., grace period of 1 week following end of month for groundwater levels)	\$909	Implement
4	Linear trend line on hydrographs calculated by 4-year rolling average of season low measurements for groundwater levels	\$1,482	No
5	Linear trend line on chemographs calculated by 3-year rolling average concentration for each constituent of concern for groundwater quality, or other methodology as defined in each Pumping Reduction Plan	\$1,077	No
6	Add a new input to the subsidence monitoring site data entry formed called: "Is this subsidence monitoring site within the SSMA (Southern Subsidence Management area) or within 1 mile of delta Mendota canal. This will be a Yes/No input.	\$336	No
7	Monthly exports of measurements exceeding the MTs by GSA	\$1,077	No
8	Data validation checks to identify questionable measurements not identified as such during monitoring activities (flag measurements as questionable that fall outside of the historical minimum and maximum for each well)	\$1,077	Implement
9	Perform QA/QC of "Export Data" tool from DMS to ensure any calculations and data categories are correct	\$741	
10	Modify groundwater level data import sheet to require associated depth to groundwater measurement	\$336	No
11	Auto-import latest InSAR layer from DWR's SGMA Data Viewer to display on DMS Dashboard Map, stations, benchmarks, extensometers	\$1,800	Implement
TOTAL		\$13,189	
Total (Implement)		\$8,881	

TO: Board of Directors
Agenda Item No. 11

FROM: Amir Mani, EKI

DATE: May 19, 2026

SUBJECT: Update on PRP Implementation and Exceedance Reporting

Recommendation

None; information only.

Discussion

An update on PRP and GSP Implementation Tracking and Exceedance Reporting is provided as **Attachment 1**.

a. Update on Q1 and Q2 Data Submittal to the DMS

Groundwater levels and groundwater quality data for the Q1 (January to March, 2026) have been uploaded into the DMS. Based on preliminary analysis, there are no MT exceedances for groundwater levels. Staff will follow up with GSAs to provide an update on the status potential groundwater quality exceedances for Q1 in the coming week.

Groundwater level data for Q2 is due to the DMS by May 31, 2026. **Please submit your Q2 data to the DMS or to staff as soon as possible.**

The single GSP indicates groundwater levels will be monitored on a quarterly basis and groundwater quality will be monitored on a biannual basis. The target months for monitoring are below:

Groundwater Level Monitoring	Groundwater Quality Monitoring
February	February
May	August
August	--
November	*Constituents: arsenic; nitrate; 1,2,3-TCP; gross alpha radioactivity; TDS; and hexavalent chromium.

GSAs are required to collect at least one measurement/sample during each target month at each representative monitoring site.

b. Report from GSAs with Exceedances




Nothing to report.

GSP/PRP IMPLEMENTATION CONTENT

- Monitoring Schedule (*for reference only*)
 - SGMA Reporting requirements
 - Undesirable Results (UR) definition
 - Pumping Reduction Plan (PRP) requirements
- Pumping Reduction Plan Implementation
 - Reminders (*for reference only*)
 - Preliminary Exceedance updates

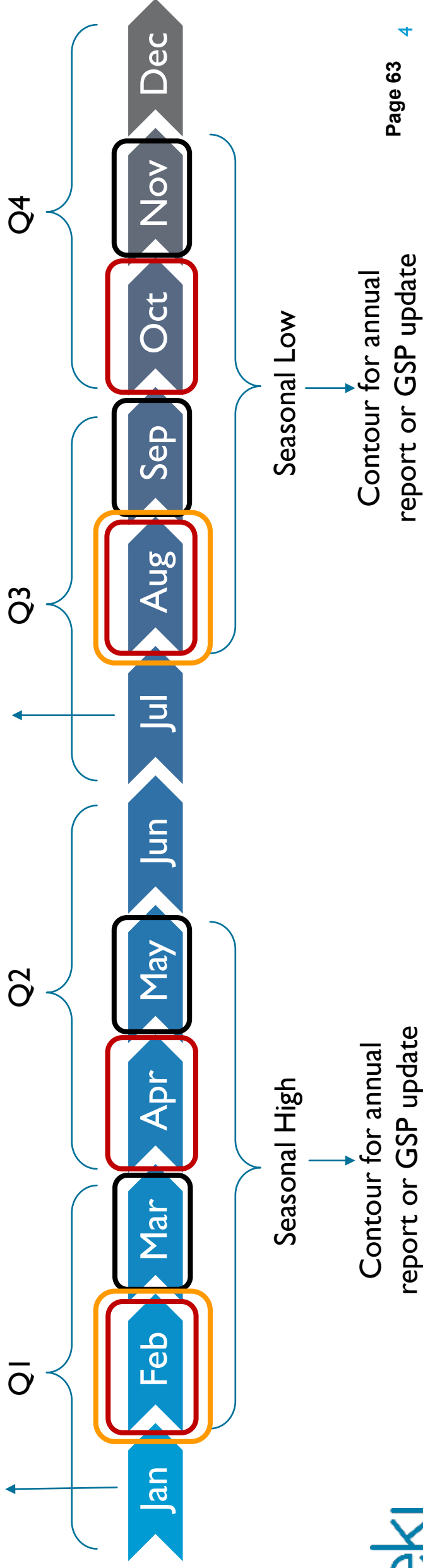
MONITORING SCHEDULE AND SGMA REPORTING REQUIREMENT

- WL data to be sampled in Feb, Apr, Aug, and Oct (quarterly sampling)
- WQ data to be sampled in Feb and Aug (semi-annual sampling)

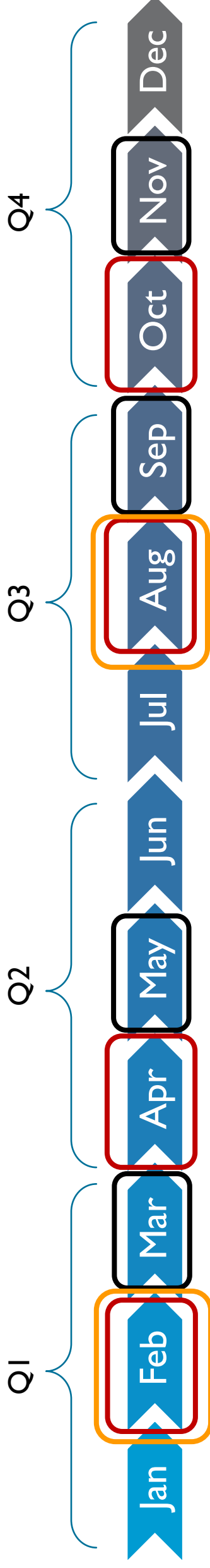
-  = WL sampling
-  = WQ sampling
-  = Data QAQC & Upload

Submission of seasonal low data to DWR

Submission of seasonal high data to DWR

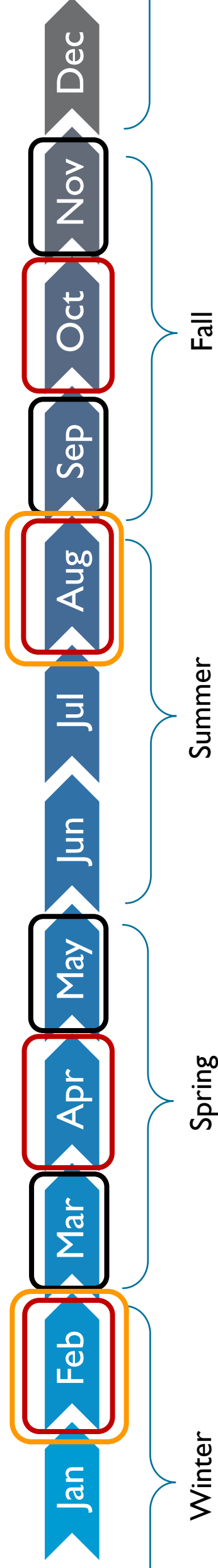


MONITORING SCHEDULE AND UR DEFINITION



- WL UR: “Groundwater levels decline below the established MTs in 25 percent or more of the RMW-WLs for two consecutive years (i.e., **eight consecutive quarterly measurements**)”
- WQ UR: “if and when MTs for a groundwater quality COC are exceeded in 15 percent of the Representative Monitoring Wells for Degraded Water Quality (RMW-WQs) in **three consecutive semiannual monitoring events** and are caused by groundwater management within the Basin.”
- MOA: data should be reviewed **within 60 days** after the data is due to be submitted by GSAs; Should GSA activities result in MT exceedances, GSAs shall present an action plan **within 30 days**.

MONITORING SCHEDULE AND PRP REQUIREMENT



- PRP: “RMW-WL-specific groundwater level triggers [are] based on the exceedance of an MT or projected exceedance of MT in a year following a four-year declining trend in **seasonal low (Fall)** groundwater levels”
- Upon exceedance of the trigger, GSAs will conduct an investigation **within a 60-day period.**

PRP IMPLEMENTATION TIMEFRAME

- GSAs to conduct regular data collection per GSP (quarterly for WL, targeting the Feb, Apr, Aug, Oct, and semi-annually for WQ, targeting Feb and Aug).

- GSAs/consultants to upload data to the DMS upon QAQC per SOP one month after sampling month [Mar, May, Sep, Nov].
- Submittal to DWR by 1 July and 1 January

- Dashboard will report triggers/exceedances of the quarter during the first month after data is uploaded.

- For wells with triggers/exceedances, GSAs to conduct an investigation within 60 days per MOA and PRP, and document investigation status in the Dashboard.
- Investigation start time will be set as the first month after all data is uploaded to the DMS (following the triggers) for consistency across the Basin.

- Following the investigation, if GSA activities result in the triggers/exceedances, GSAs shall present a plan of action to the JPA within 30 days per MOA.
- GSAs to implement action plan per PRP and track PRP implementation in the Dashboard.

PRP REMINDER #1: MONITORING & REPORTING

- Q2 sampling event data should be submitted to DMS by the end of May (deadline to upload to DWR is July 1)
- PRP status update (i.e., new triggers or exceedances) on Q1 2026 data in following slides
- Continue with any pending investigation or required actions (see following slides)
- Submit your actions and investigations to the PRP Dashboard in a timely manner and upload relevant data to DMS (see following slides)

PRP REMINDER #2: WELL REGISTRATION AND OVERDRAFT REDUCTION

- **Component #1: Monitoring & Reporting**
 - Well registration and Well Metering deadline was January 2026 → **Needs to be tracked and submitted to Dashboard**
 - Need to replace composite or production wells used as RMWs by 2030.

■ **Component #2: Overdraft Reduction**

- Zones are required to reduce pumping by the totals provided as part of the PRP → **GSA's need to track this efforts. GSA reported total pumping amount should be checked against high-level water budget**
- Baseline for comparison used to calculate the overdraft reduction was the projected average annual pumping under CC-2030 scenario.

Projected Baseline Pumping with P/MAs

	Upper Aquifer (AFY)	Lower Aquifer (AFY)
Zone 1	-93,120	-18,947
Zone 2	-152,995	-20,609
Zone 3	-29,650	-59,242
Zone 4	-33,901	-114,501
Basin	-309,666	-213,299

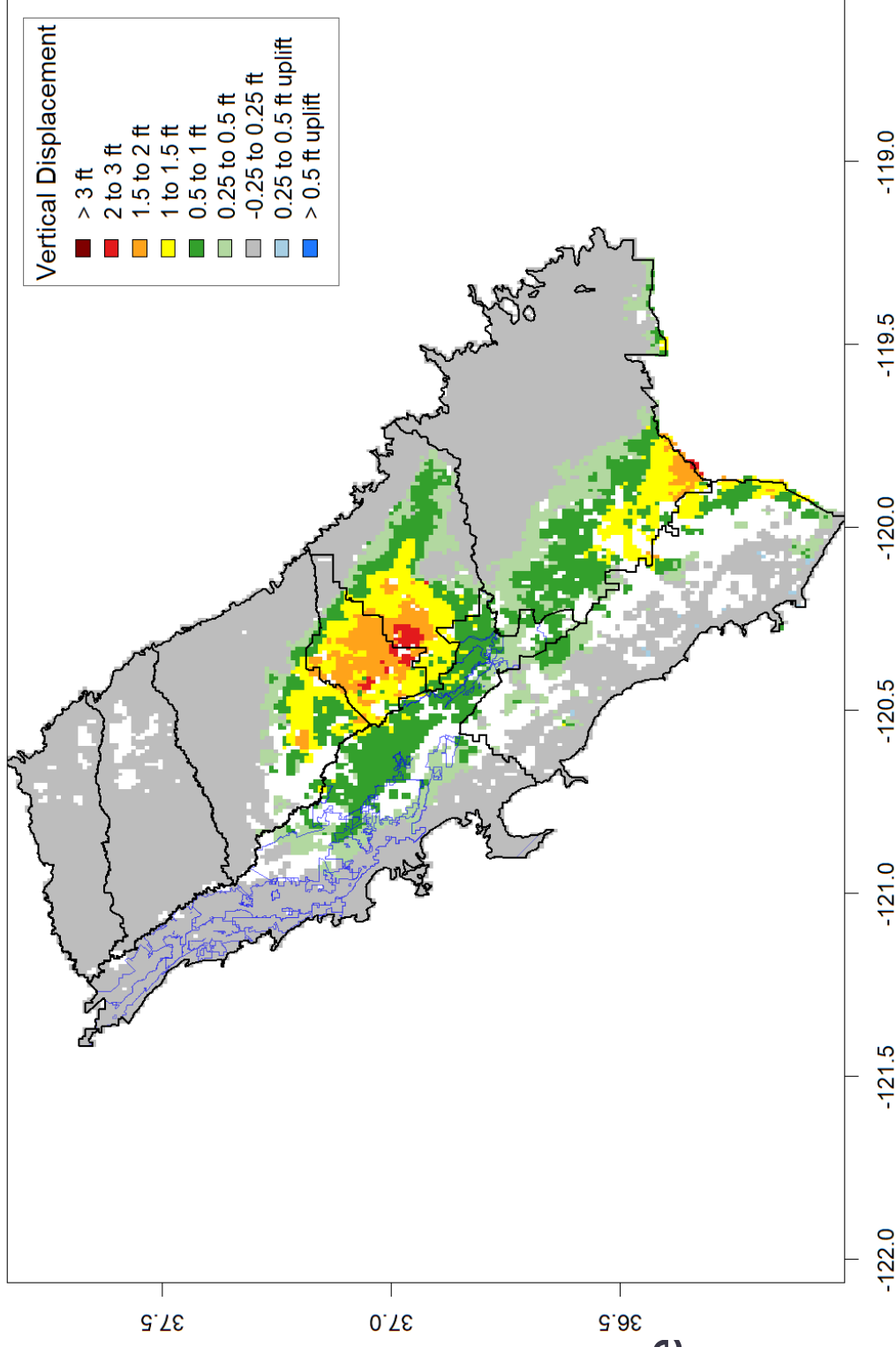
Required Reduction for Overdraft Mitigation

	Upper Aquifer Reduction (AFY)	Lower Aquifer Reduction (AFY)
Zone 1	2,798	2,886
Zone 2	4,619	3,139
Zone 3	803	9,023
Zone 4	1,303	17,440
Basin	9,523	32,487

PRP REMINDER #3: SUBSIDENCE AVOIDANCE

- 2030 Subsidence IM = **1.5 ft**
since 2020
- 2040 Subsidence MT = **2 ft**
since 2020
- Maximum subsidence between Jan 2020-Jan 2026 within Delta-Mendota Subbasin = **1.41 ft**
- Remaining allowed subsidence from MT ~ 0.6 ft (30 months → June 2028)

Total Subsidence Since 2020 (ft)



GWL EXCEEDANCES & TRIGGERS: 2026 Q1 (FEB)

- No quarterly GWL exceedances occurred during Q1 2026, based on data uploaded to DMS as of May 14
- Fall 2025 Watchlist wells (below) should be monitored closely during Q2 2026 sampling

DMS Site Name	Local Well Name	GSA	Aquifer	Trigger/Past Trigger	Investigation Status
09-001	2480-72	Aliso WD	Upper	Exits Fall 2024 MT Exceedance → Triggers Projected Fall 2026 MT Exceedance	Renewed investigation or confirmation of previous one is needed
09-232	North Lower	Aliso WD	Lower	Exits Fall 2024 MT Exceedance	Investigation completed in 2024 and did not exceed MT in Fall 2025
07-189	Well 18	Central DM	Lower	PRP triggered last Fall, MT exceedance again this Fall → SMC to be updated	Investigation completed in 2024 and voluntary actions taken consistent with PRP
07-212	Well 31	Central DM	Lower	MT Exceedance	Investigation ongoing, continued monitoring, well recovered
11-010	IPL-1	Grassland	Lower	MT Exceedance	Running well sample, not representative, continued monitoring
11-019	3PL-2	Grassland	Lower	MT Exceedance	Running well sample, not representative, continued monitoring
11-021	IPL-5	Grassland	Lower	MT Exceedance	RMW to be replaced. Video logging showed casing ruptures
14-025	SDMW West - Lower Aquifer	SJREC	Lower	Watchlist: Projected Fall Elevation to Fall Below 10% of Operational Flexibility	Not Required
18-002	Newman City #8	SJREC	Lower	Watchlist: Last Fall Sample below 20% of Operational Flexibility	Not Required

GWQ EXCEEDANCES & TRIGGERS: 2026 Q1 (FEB)

- Q1 2026 sampling event showed ~6 exceedances of TDS and Nitrate.
- However, data in the DMS appears incomplete:
 - GSAs with suspect or missing data will be contacted
 - Results will be re-evaluated once QA/QC process complete
- Per MOA, investigation and reporting of verified exceedances is needed within 60 days.

INTERBASIN COORDINATION

Completed				
Tracy Subbasin	Chowchilla	Westside	East San Joaquin (Attended Tracy Mtg.)	Madera
Merced				
Scheduled				
Kings	June 19 – Online, Agenda Topics: <ul style="list-style-type: none"> • Measurable Objectives • Minimum Thresholds • Subsidence • Demand Management • Water Budgets Attending: Martin, Hopkins, Stilwell, Ramirez, Blakslee, Beutler			
Remaining				
Modesto/Turlock	Meeting will be tied to the release of Interconnected Surface Water			

-
- **Domestic Well Outreach Briefing** – May 29, Noon, available in English and Spanish. NGOs asked to advertise the briefing to their own audiences.
 - Recorded for use on website
 - **Newsletter**
 - **Website**
 - **Committee Membership**

OTHER COMMUNICATIONS TOPICS

TO: Board of Directors
Agenda Item No. 10

FROM: Taylor Blakslee, Hallmark Group

DATE: May 19, 2026

SUBJECT: Program Management Report and Update on Action Items

Recommendation

None; Informational only.

Discussion

An update on the status of action items is provided as **Attachment 1**.

GSA Adoption of the Revised MOA:

All GSAs have adopted the revised MOA, and staff is awaiting a signature from one remaining GSA. Once all signatures are received, staff will distribute an executed copy of the MOA to all GSAs.

Delta-Mendota Subbasin

Meeting Date	Agenda Item	Action Item	Assigned	Due Date	Status	Status & Notes
11/10/2025	11d	Staff to coordinate with GSAs on initial exceedance reports and action plans.	K. Liddy	Ongoing	Ongoing	Continue tracking and notifying GSAs of exceedances to prepare initial reports and action plans.
11/10/2025	12	Facilitate domestic well mitigation briefing	L. Beutler	Spring 2026	In Progress	Briefing scheduled for May 29, 2026.
2/4/2026	18	Research insurance costs for the DM Authority and Northern DM Committee.	Hallmark Group	ASAP	In Progress	HUB quote has been obtained, while 2 others are being obtained. Three quotes will be presented at the June meeting.
3/9/2026	14	Facilitate the execution of the contract with W&C to extend the grant through 2027.	K. Liddy	4/1/2027	Done	Contract executed. Final invoicing package due to DWR June 2026.
3/9/2026	15	Finalize the Monitoring Guidance Document.	K. Pallys	4/30/2026	Done	Provided in the Board packet for consideration of approval.
3/9/2026	16	Track MOA signatures and distribute executed copy once obtained.	K. Liddy	5/30/2026	In Progress	Awaiting one signature.
4/13/2026	10	Convene the technical ad hoc and budget ad hoc, with reps from each GSA Group present	K. Liddy	5/18/2026	Done	Convened on April 21 and 22, 2026.
4/13/2026	14	Work with GSA representatives to provide an update on the status of compliance with registration and metering policies.	Hallmark Group	6/8/2026	In Progress	To be agendaized for subsequent meetings.
4/13/2026	15	Work with appropriate GSAs and consultants to determine feasibility of establishing the recommended subsidence benchmark sites.	Hallmark Group	ASAP	In Progress	Working with Aliso WD and Del Puerto WD reps, reaching out to GSA leads for next steps.
4/13/2026	16	Work with the communications ad hoc committee to finalize the well mitigation policy workshop materials.	Hallmark Group / L. Beutler	5/18/2026	In Progress	Materials for the workshop distributed to the ad hoc on May 18, 2026 for review and feedback.