

MEETING OF THE MANAGEMENT COMMITTEE OF THE NORTHERN DELTA-MENDOTA REGION ACTIVITY AGREEMENT AND MEETING OF THE STEERING COMMITTEE OF THE CENTRAL DELTA-MENDOTA MULTI-AGENCY GSA, AND MANAGEMENT COMMITTEE OF THE CENTRAL DELTA-MENDOTA REGION ACTIVITY AGREEMENT

MEETING MINUTES FOR APRIL 26, 2018

The Management Committee of the Northern Delta-Mendota Region Activity Agreement, the Steering Committee of the Central Delta-Mendota Multi-Agency GSA, and the Management Committee of the Central Delta-Mendota Region Activity Agreement convened at approximately 10:30 am at 842 6TH Street, Los Banos, California.

Steering Committee Members and Alternate Members in Attendance

Danny Wade – Alternate
Vince Luchessi – Member
Aaron Barcellos – Member
Amy Montgomery – Member
Juan Cadena - Alternate
Christina Guzman – Alternate
Ben Fenters - Alternate
Lacy Kiriakou - Member
Maria Encinas – Member
Glenn Allen – Alternate
Bobby Pierce – Member
Damian Argona – Member
Fernando Ulloa - Member

Authority Representatives Present

Diane Rathmann – Legal Counsel

Others Present

Leslie Dumas – Woodard & Curran
Joyce Machado - SLDMWA
Breanne Ramos – Merced County Farm Bureau

1. Call to Order/Roll Call

The Meeting was called to order by Leslie Dumas at approximately 10:35 am.

2. Opportunity for Public Comment

There was no public comment.

Consent Calendar

3. Committees to Consider Approval of Meeting Minutes

a. Motion to Approve the Minutes, as presented on the Consent Calendar, by Mr. Luchessi. Second by Mr. Fenters. All agree.

4. Update Committees to Consider Approval of Financial & Expenditures Report
 - a. Motion to Approve the Financial & Expenditures Report, as presented on the Consent Calendar, by Mr. Pierce. Second by Mr. Luchessi. All agree

Action Items

5. Committees to Consider Authority Recommendation and Authorize Agreement Amendment for Additional Line Item – Grant Administration for Individual Project (GSP)

Ms. Dumas requested that the current contract be amended to include grant management. The total cost for the Northern and Central groups will be \$24,675, added to the existing contract. There was a discussion of how the costs would be divided between the two GSAs.

Motion to authorize amendment of contract for an additional \$24,675 by Mr. Pierce. Second by Mr. Luchessi. All agree.

Report Items

6. Update on the Communications Working Group Workshop Planning

The logo has been approved. The working group will be sending out communication FAQ sheets to stakeholders. The group is also preparing for the first round of workshops, which will include a high-level presentation. Posters are being developed showing all GSAs in the sub-basin. The group will continue to work towards getting the word out about meetings.

7. Report on Comment letter on Draft EIR for the Crows Landing Industrial Business Park

The Comment letter was distributed and any agency desiring to comment needs to have comments back to the Authority by Wednesday. The Authority will sign. There was a discussion about how comments will be handled in the future. It was suggested that a template be developed.

8. Update on the Coordination Agreement and Cost Share Agreement Package

Documents have been sent to all participants with samples that can be used for multiple purposes. Ms. Rathmann discussed amendments to the Activity Agreements and SS-MOAs, procedures, and how to appoint Coordination Committee representative(s). Once the amendment has been reviewed and commented on by the group, the document will be brought to the group for approval and then should be taken to the individual agencies. A resolution will be needed for the amendment.

9. Groundwater Sustainability Plan Development

Ms. Dumas gave an update of the GSP development. There was a discussion of management areas, defining undesirable results, and methodologies. There was further discussion of the DWRs inconsistency of information and getting criteria clarified. Ultimately, the goal is how water will be managed in the basin. The more management areas, the more complexity. Also, Ms. Dumas pointed out that the GSP must be updated every five years, so it should not be over-complicated. There was a further discussion of the Corcoran Clay and rain affects. There was a discussion of two management areas: no groundwater and shallow areas. Ms. Dumas covered the “six deadly sins” of undesirable results and all the requirements needed in the GSP. There was a discussion of goals, assumptions, conversion of land, land use changes, and water needs. There was also a discussion of water quality and exceeding MCLs.

10. Reports Pursuant to Government Code Section 54954.2(a)(2)

There was further discussion of the changes stated in the amendment.

11. Meeting adjourned at 12:20 pm.

Approved by:

Chairman

Attest:

Secretary

**Northern & Central Delta-Mendota Regions GSP
Descriptions of Undesirable Results**

The following summarizes the description of undesirable results as discussed during the Northern & Central Delta-Mendota Management Committee meeting on April 26, 2018.

Sustainability Criterion	Regulatory Criterion Description	Description of Undesirable Results in Northern & Central Regions of the Delta-Mendota Subbasin
Chronic Lowering of Groundwater Levels	Chronic lowering of groundwater levels indicating a significant and unreasonable depletion of supply if continued over the planning and implementation horizon	<ul style="list-style-type: none"> • Continual decline in water levels • Private domestic wells go dry
Reduction in Groundwater Storage	Significant and unreasonable reduction in groundwater storage	<ul style="list-style-type: none"> • Running out of storage to get through a 3 to 4-year drought
Seawater Intrusion	Not Applicable	
Degraded Water Quality	Significant and unreasonable degraded water quality, including the migration of contaminant plumes that impair water supplies	<ul style="list-style-type: none"> • Increasing decline in key water quality parameters (nitrates, salts, hexavalent chromium, selenium, boron, arsenic)
Land Subsidence	Significant and unreasonable land subsidence that substantially interferes with surface land uses	<ul style="list-style-type: none"> • Impacts to private and public infrastructure from differential subsidence
Depletion of Interconnected Surface Water	Depletions of interconnected surface water that have significant and unreasonable adverse impacts on beneficial uses of the surface water	<ul style="list-style-type: none"> • Loss of interconnections with surface water • Impacts to groundwater dependent ecosystems (GDEs) due to declining groundwater levels

Northern Central Delta-Mendota GSP SGMA Monitor Well Network Participation Q&A

Q: Who will be conducting the monitoring?

A: For groundwater elevations if automated water level recoding is possible we will attempt to set up the well for that. Otherwise either a SLDMWA representative or a SLWD representative will perform the groundwater elevation measurements and water quality sampling. If you have a preference we would do our best to accommodate.

Q: How often will my well need to be accessed?

A: This is still to be determined as the GSP (Groundwater Sustainability Plan) is developed. Current thinking is that wells will be evaluated monthly for groundwater elevations and annually or for water quality.

Q: Will the monitors work around farming operation schedule?

A: Due to the vastness of the size of the monitor network we would need to set a schedule for monitoring events where for example: all the wells in Region A get measured on Day A and all the Wells in Region B get measured on Day B. However, we will build in flexibility to the monitoring program to avoid periods of extreme heat and frost.

Q: What will be required of me?

A:

- Well construction information or the ability to conduct a video survey of your well.
- Coordination for access and well operation around the measurement period unless it is unavoidable.
- Any official or unofficial water level or water quality information you have collected would be very beneficial to the program (even if you do not wish your well to be a part of the program).

Q: Is there an incentive to participate?

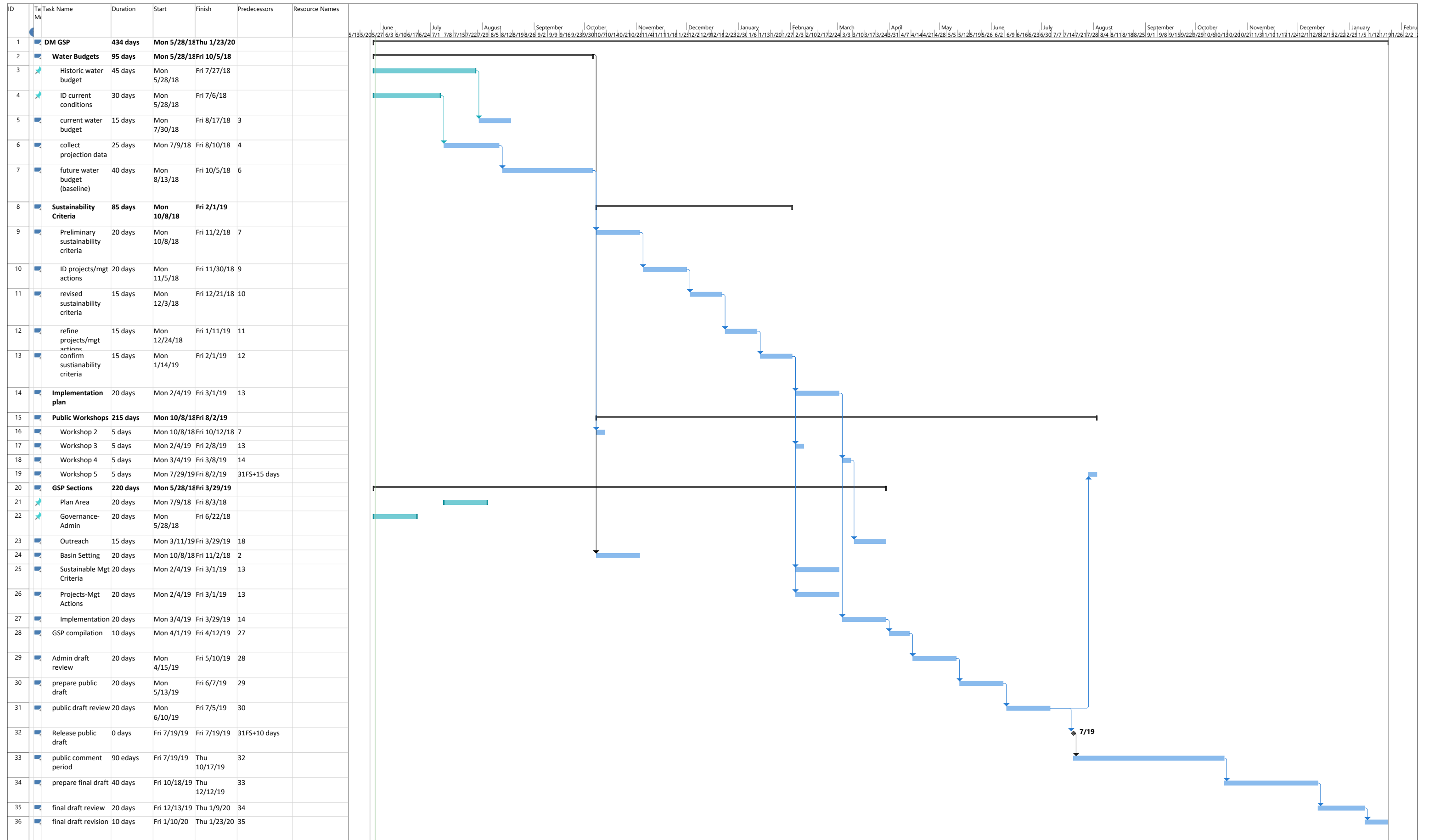
A: Your well (if chosen) will be directly represented under SGMA. Therefore, if neighboring entities are unduly impacting your groundwater conditions with their operations there will be redress.

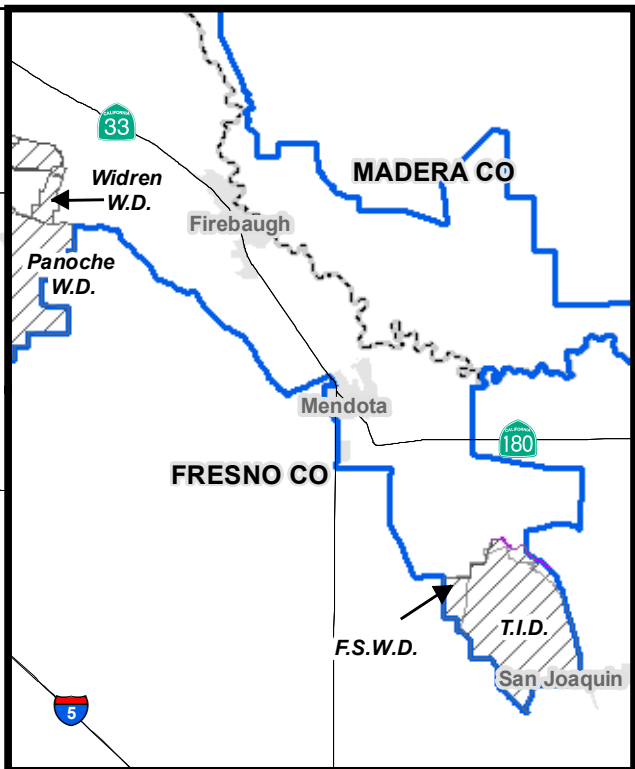
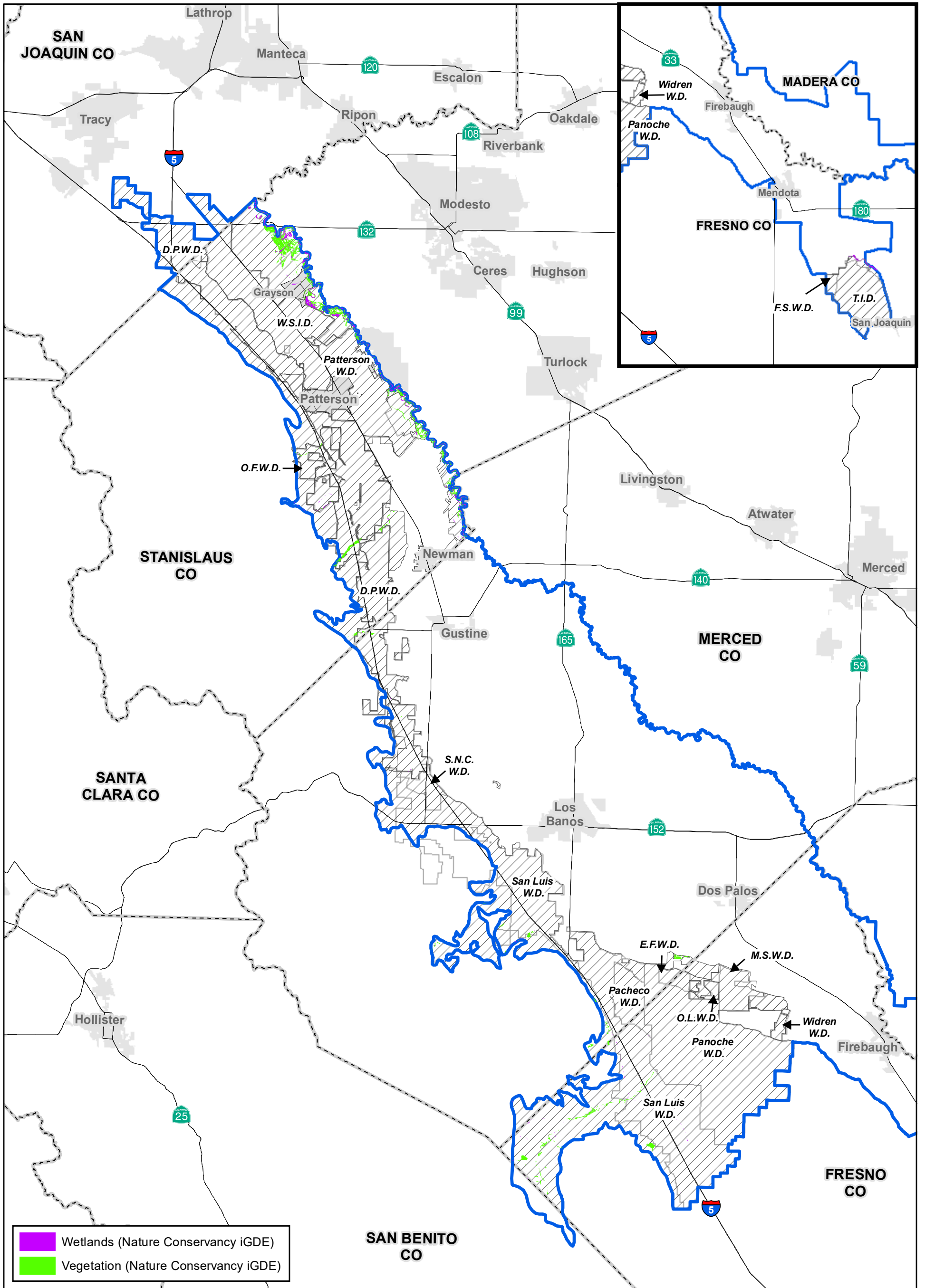
Q: What if I do not participate?

A: Your pumping abilities will be governed by the threshold and triggers established within the nearest well that is participating in the SGMA monitoring network. If a voluntary well isn't located within a reasonable distance, a monitor well may be constructed in your area for the purpose of representing your area in SGMA.

Q: Will this increase the likelihood of my well being shutoff or for reduced pumping?

A: As your data would be included in the formation of the Sustainability Plan, it would provide us with a more accurate depiction of the regional aquifer and provide direct representation of your well's characteristics and influence the threshold criteria set for your area. An insufficiently represented area will likely result in the GSA erring on the side of caution when establishing trigger levels therefore, not participating may adversely impact your future operating parameters.





Wetlands (Nature Conservancy iGDE)
 Vegetation (Nature Conservancy iGDE)

PROVOST & PRITCHARD
 CONSULTING GROUP
 An Employee Owned Company

EST. 1968

0 2.5 5
 Miles

- NCDM GSP Area
- City
- County Boundaries
- Delta-Mendota GW Subbasin
- Water District
- Highway

Northern Central Delta Mendota GSP Region