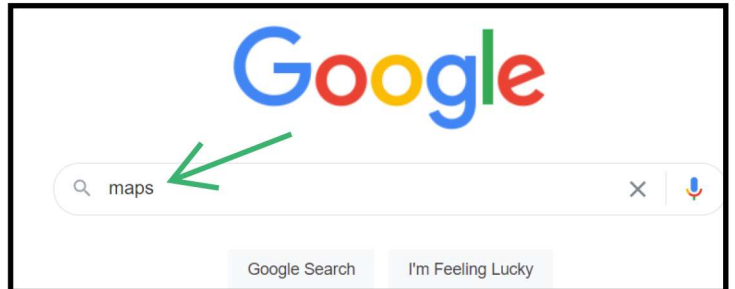
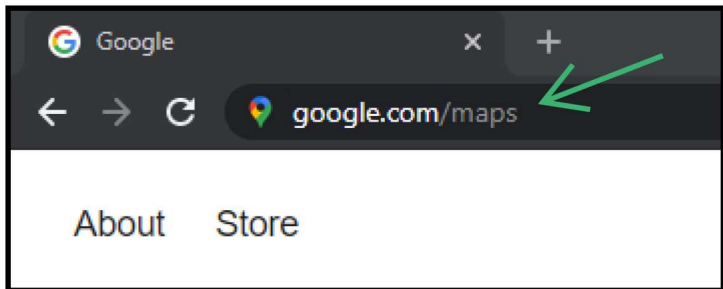


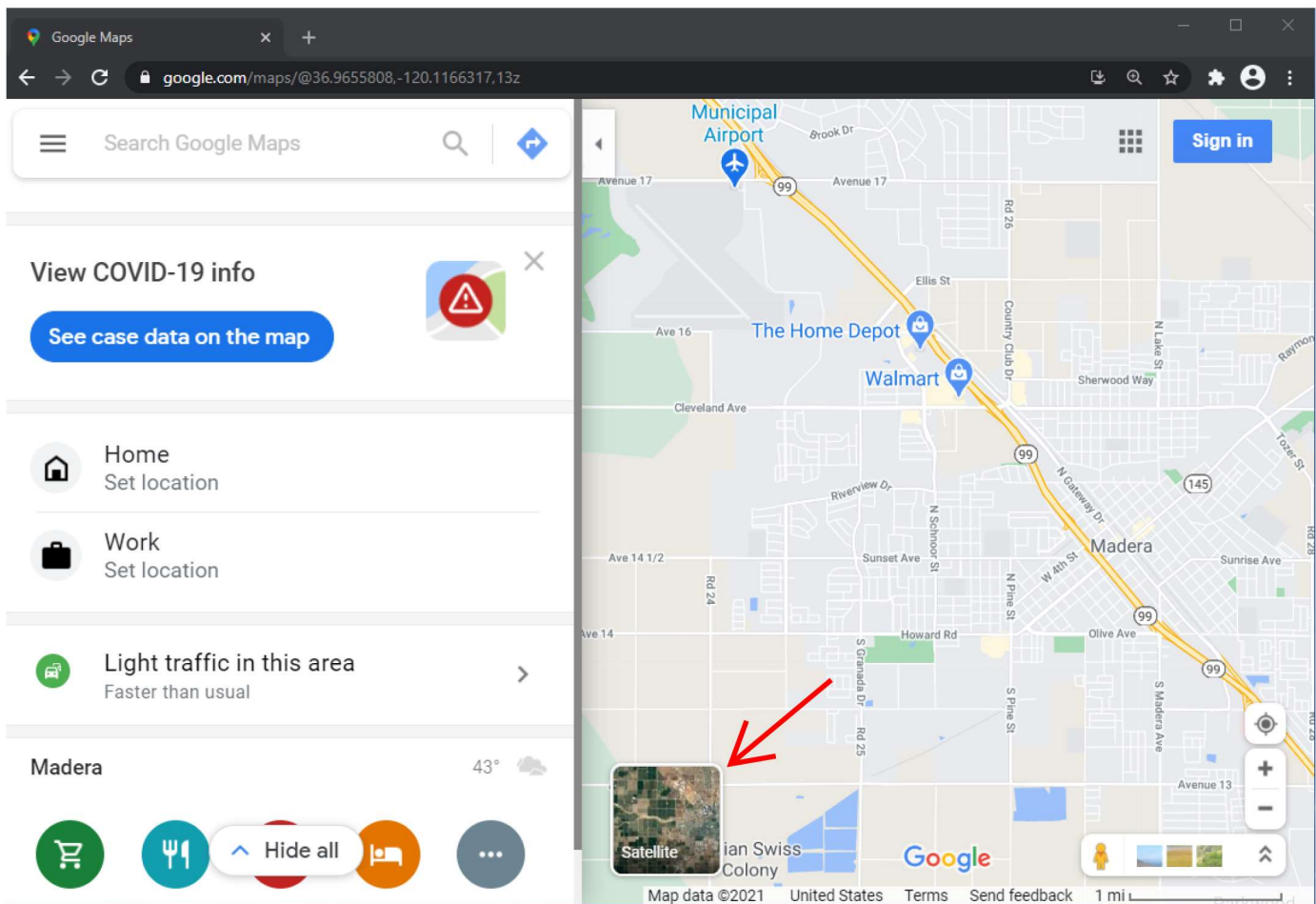
Simple Steps to determine Latitude and Longitude Using Google Maps

In this example we will determine the Lat/Lon of home plate at Los Banos Highschool's baseball diamond.

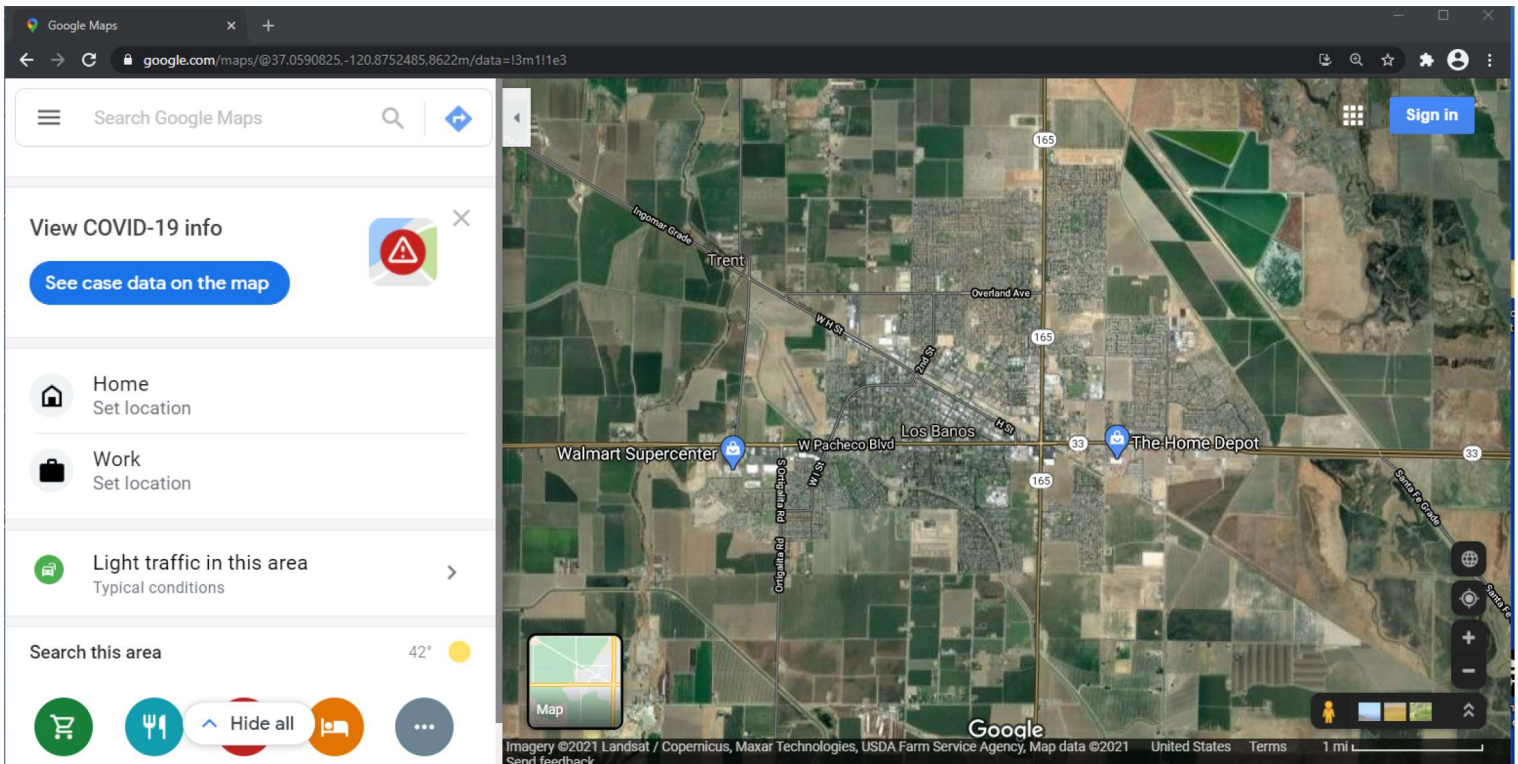
1) Open a browser and type in "google.com/maps" in the URL, or type in "maps" in a google search.



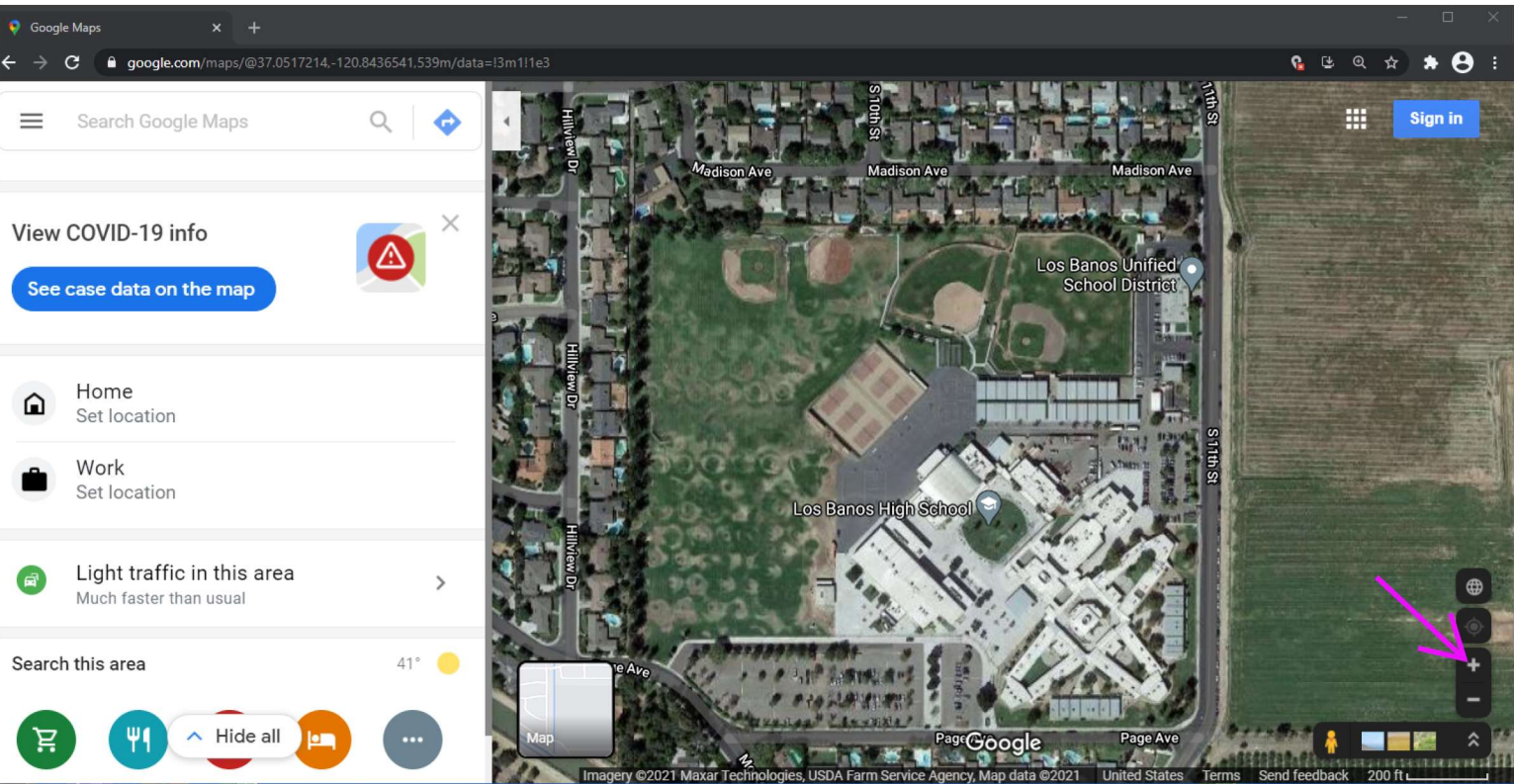
2) Click on the Satellite Icon (**Red Arrow**)



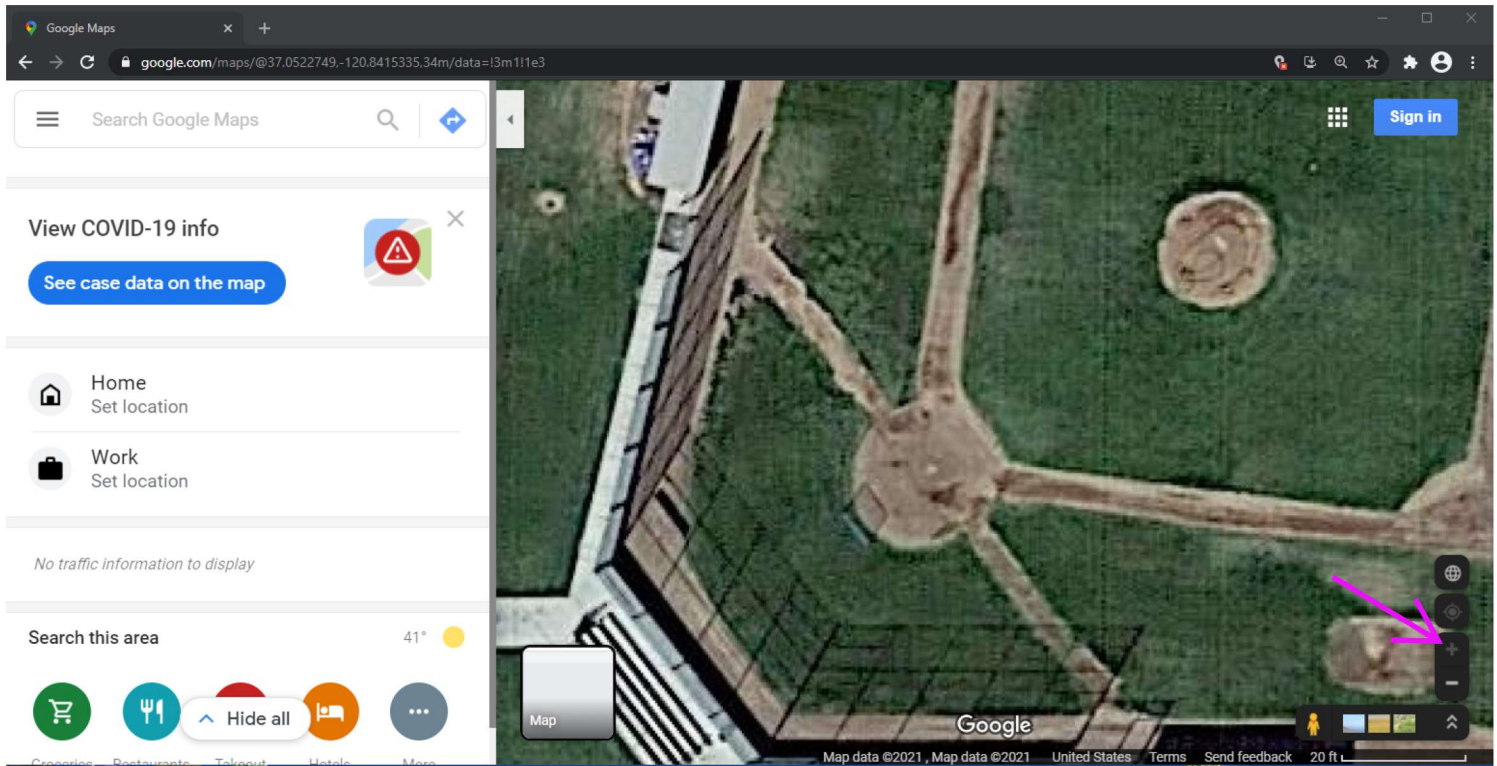
3) Use the Mouse to DRAG the map to the location of your well.



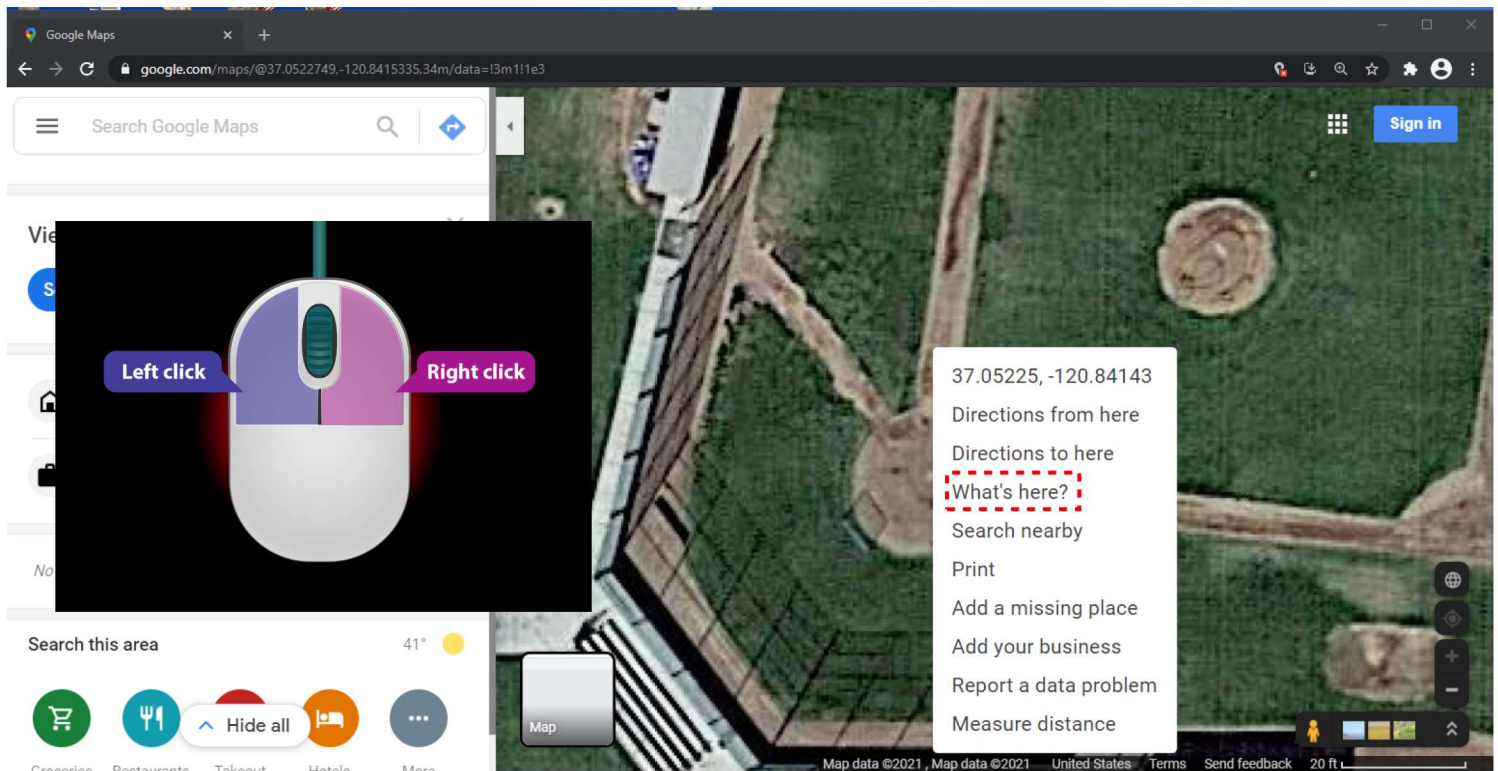
4) Use the (+) icon (purple arrow) to zoom in on the location of your well. DRAG the map as needed to keep your well in the center of the map as you zoom in.



5) Fully zoom in on the location of your well note the the (+) icon (**purple arrow**) will turn dark gray at maximum zoom.



6) Using your mouse right click on your well and select "What's Here" in the drop menu **Red Box**



7) Verify the icon (**green arrow**) is located on your well, (if not repeat step 6). The latitude and longitude can be found below **Red Box**

